

For Research Use Only

Leptin Recombinant antibody

Catalog Number: 83655-3-RR



Basic Information

Catalog Number: 83655-3-RR	GenBank Accession Number: NM_013076.3	Purification Method: Protein A purification
Size: 100ul , Concentration: 800 ug/ml by Nanodrop;	GeneID (NCBI): 25608	CloneNo.: 240368E6
Source: Rabbit	UNIPROT ID: P50596	Recommended Dilutions: WB 1:500-1:2000 IHC 1:50-1:500
Isotype: IgG	Full Name: leptin	
	Calculated MW: 19 kDa	
	Observed MW: 15-16 kDa	

Applications

Tested Applications: WB, IHC, ELISA	Positive Controls:
Species Specificity: rat	WB : rat adipose tissue, IHC : human placenta tissue,
Note-IHC: suggested antigen retrieval with <i>TE buffer pH 9.0; (*) Alternatively, antigen retrieval may be performed with citrate buffer pH 6.0</i>	

Background Information

Leptin is a protein that is secreted by white adipocytes, and which plays a major role in the regulation of body weight. Leptin is the most critical hormone in the homeostatic regulation of energy balance among those so far discovered. Leptin primarily acts on the neurons of the mediobasal part of hypothalamus to regulate food intake, thermogenesis, and the blood glucose level. Leptin also has several endocrine functions, and is involved in the regulation of immune and inflammatory responses, hematopoiesis, angiogenesis and wound healing. Mutations in this gene and/or its regulatory regions cause severe obesity, and morbid obesity with hypogonadism. Leptin has also been linked to type 2 diabetes mellitus development.

Storage

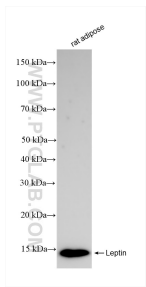
Storage:
Store at -20°C. Stable for one year after shipment.
Storage Buffer:
PBS with 0.02% sodium azide and 50% glycerol pH 7.3.
Aliquoting is unnecessary for -20°C storage

*** 20ul sizes contain 0.1% BSA

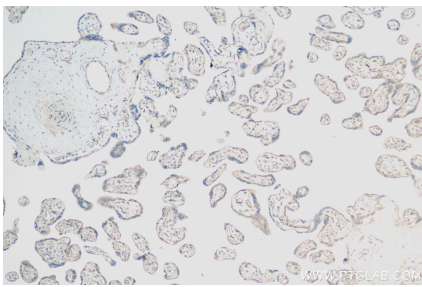
For technical support and original validation data for this product please contact:
T: 1 (888) 4PTGLAB (1-888-478-4522) (toll free in USA), or 1(312) 455-8498 (outside USA)
E: proteintech@ptglab.com
W: ptglab.com

This product is exclusively available under Proteintech Group brand and is not available to purchase from any other manufacturer.

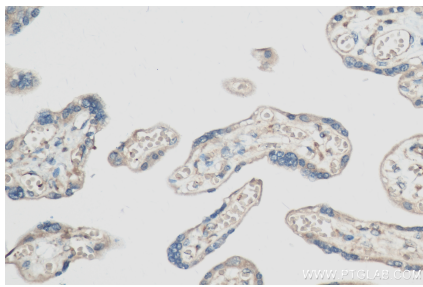
Selected Validation Data



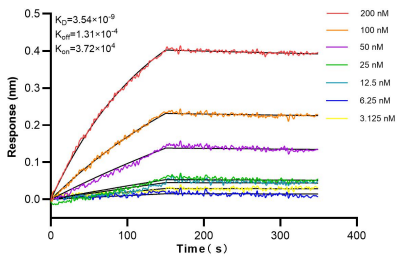
Rat adipose tissue was subjected to SDS PAGE followed by western blot with 83655-3-RR (Leptin antibody) at dilution of 1:1000 incubated at room temperature for 1.5 hours.



Immunohistochemical analysis of paraffin-embedded human placenta tissue slide using 83655-3-RR (Leptin antibody) at dilution of 1:200 (under 10x lens). Heat mediated antigen retrieval with Tris-EDTA buffer (pH 9.0).



Immunohistochemical analysis of paraffin-embedded human placenta tissue slide using 83655-3-RR (Leptin antibody) at dilution of 1:200 (under 40x lens). Heat mediated antigen retrieval with Tris-EDTA buffer (pH 9.0).



Biolayer interferometry (BLI) kinetic assays of 83655-3-RR against Rat Leptin were performed. The affinity constant is 3.54 nM.