

For Research Use Only

RNF216 Recombinant antibody, PBS Only (Capture)

Catalog Number: 83658-2-PBS



Basic Information

Catalog Number: 83658-2-PBS	GenBank Accession Number: BC000787	Purification Method: Protein A purification
Size: 100ug , Concentration: 1 mg/ml by Nanodrop;	GeneID (NCBI): 54476	CloneNo.: 240489G2
Source: Rabbit	UNIPROT ID: Q9NWF9	
Isotype: IgG	Full Name: ring finger protein 216	
Immunogen Catalog Number: AG0238	Calculated MW: 48 kDa	
	Observed MW: ~130 kDa	

Applications

Tested Applications:
WB, FC (Intra), IP, Cytometric bead array, Indirect ELISA

Species Specificity:
human

Product Information

83658-2-PBS targets RNF216 as part of a matched antibody pair:

MP00643-1: 83658-2-PBS capture and 83658-5-PBS detection (validated in Cytometric bead array)

Unconjugated rabbit recombinant monoclonal antibody in PBS only (BSA and azide free) storage buffer at a concentration of 1 mg/mL, ready for conjugation. Created using Proteintech's proprietary in-house recombinant technology. Recombinant production enables unrivalled batch-to-batch consistency, easy scale-up, and future security of supply.

This conjugation ready format makes antibodies ideal for use in many applications including: ELISAs, multiplex assays requiring matched pairs, mass cytometry, and multiplex imaging applications. Antibody use should be optimized by the end user for each application and assay.

Background Information

RNF216/TRIAD3 is an RBR (RING-between-RING) E3 ligase that encodes for multiple isoforms that include TRIAD3A, TRIAD3B, TRIAD3C and TRIAD3D/E. RNF216 is a broadly expressed RBR E3 ligase, and loss-of-function mutations in RNF216 are linked to the neurodegenerative conditions Gordon-Holmes syndrome (GHS) and Huntington-like disorders (PMID: 34998453, 35620441). RNF216 has three different molecular weights, 99 kDa, 106 kDa and 57 kDa, respectively. Western analysis detected the ~130 kDa band as indicated in literature (PMID: 21270397).

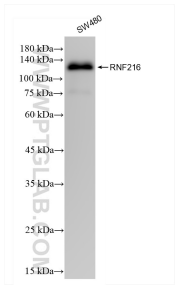
Storage

Storage:
Store at -80°C.
Storage Buffer:
PBS Only

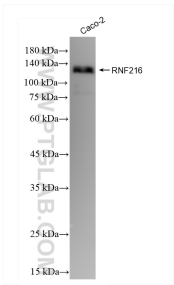
For technical support and original validation data for this product please contact:
T: 1 (888) 4PTGLAB (1-888-478-4522) (toll free in USA), or 1(312) 455-8498 (outside USA)
E: proteintech@ptglab.com
W: ptglab.com

This product is exclusively available under Proteintech Group brand and is not available to purchase from any other manufacturer.

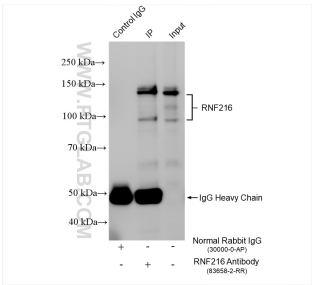
Selected Validation Data



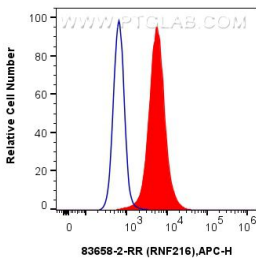
SW480 cells were subjected to SDS PAGE followed by western blot with 83658-2-RR (RNF216 antibody) at dilution of 1:10000 incubated at room temperature for 1.5 hours. This data was developed using the same antibody clone with 83658-2-PBS in a different storage buffer formulation.



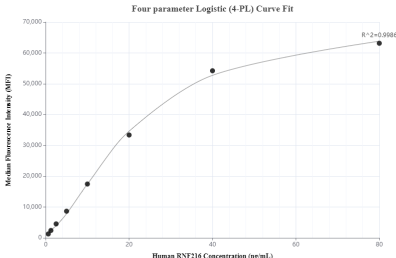
Caco-2 cells were subjected to SDS PAGE followed by western blot with 83658-2-RR (RNF216 antibody) at dilution of 1:10000 incubated at room temperature for 1.5 hours. This data was developed using the same antibody clone with 83658-2-PBS in a different storage buffer formulation.



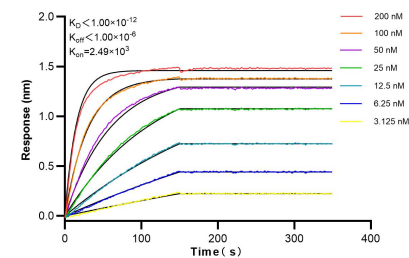
IP result of anti-RNF216 (IP:83658-2-RR, 4ug; Detection:83658-2-RR 1:1000) with SW480 cells lysate 1280 ug. This data was developed using the same antibody clone with 83658-2-PBS in a different storage buffer formulation.



1x10⁶ A431 cells were intracellularly stained with 0.25 ug RNF216 Recombinant antibody (83658-2-RR, Clone:240489G2) and APC-Conjugated AffiniPure Goat Anti-Rabbit IgG(H+L) (red), or 0.25 ug Isotype Control (blue). Cells were fixed with 4% PFA and permeabilized with Flow Cytometry Perm Buffer (PF00011-C). This data was developed using the same antibody clone with 83658-2-PBS in a different storage buffer formulation.



Cytometric bead array standard curve of MP00643-1, RNF216 Recombinant Matched Antibody Pair, PBS Only. Capture antibody: 83658-2-PBS. Detection antibody: 83658-5-PBS. Standard: Ag0238. Range: 0.625-80 ng/mL.



Biolayer interferometry (BLI) kinetic assays of 83658-2-RR against Human RNF216 were performed. The affinity constant is below 1 pM.