

For Research Use Only

PHKG2 Recombinant antibody, PBS Only (Detector)

Catalog Number: 83663-2-PBS



Basic Information

Catalog Number: 83663-2-PBS	GenBank Accession Number: BC002541	Purification Method: Protein A purification
Size: 100ug , Concentration: 1 mg/ml by Nanodrop;	GeneID (NCBI): 5261	CloneNo.: 240643E1
Source: Rabbit	UNIPROT ID: P15735	
Isotype: IgG	Full Name: phosphorylase kinase, gamma 2 (testis)	
Immunogen Catalog Number: AG6829	Calculated MW: 46 kDa	
	Observed MW: 46 kDa	

Applications

Tested Applications:
WB, IHC, IF/ICC, FC (Intra), Cytometric bead array, Indirect ELISA

Species Specificity:
human, mouse

Product Information

83663-2-PBS targets PHKG2 as part of a matched antibody pair:

MP00632-2: 83663-4-PBS capture and 83663-2-PBS detection (validated in Cytometric bead array)

Unconjugated rabbit recombinant monoclonal antibody in PBS only (BSA and azide free) storage buffer at a concentration of 1 mg/mL, ready for conjugation. Created using Proteintech's proprietary in-house recombinant technology. Recombinant production enables unrivalled batch-to-batch consistency, easy scale-up, and future security of supply.

This conjugation ready format makes antibodies ideal for use in many applications including: ELISAs, multiplex assays requiring matched pairs, mass cytometry, and multiplex imaging applications. Antibody use should be optimized by the end user for each application and assay.

Background Information

PHKG2 (phosphorylase kinase catalytic subunit gamma 2), it is expected to be located in the cytoplasm, which is enriched in the testis. Catalytic subunit of the phosphorylase b kinase (PHK), which mediates the neural and hormonal regulation of glycogen breakdown (glycogenolysis) by phosphorylating and thereby activating glycogen phosphorylase. It may regulates glycogeneolysis in the testis. Phosphorylase kinase is a polymer of 16 subunits, four each of alpha, beta, gamma and delta. The gamma subunit also includes the skeletal muscle and hepatic isoforms, and the hepatic isoform is encoded by this gene. The gamma subunits contain the active site of the enzyme, whereas the alpha and beta subunits have regulatory functions controlled by phosphorylation. The delta subunit mediates the dependence of the enzyme on calcium concentration. The molecular weight of PHKG2 is 46 kDa.

Storage

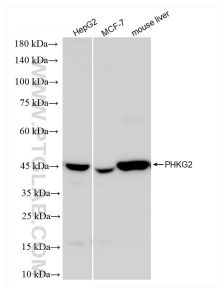
Storage:
Store at -80°C.

Storage Buffer:
PBS Only

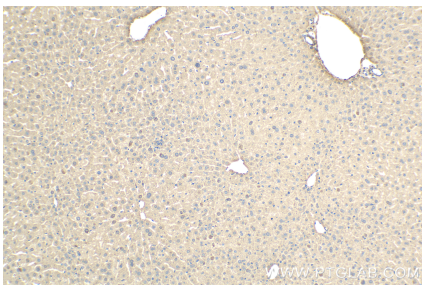
For technical support and original validation data for this product please contact:
T: 1 (888) 4PTGLAB (1-888-478-4522) (toll free in USA), or 1(312) 455-8498 (outside USA)
E: proteintech@ptglab.com
W: ptglab.com

This product is exclusively available under Proteintech Group brand and is not available to purchase from any other manufacturer.

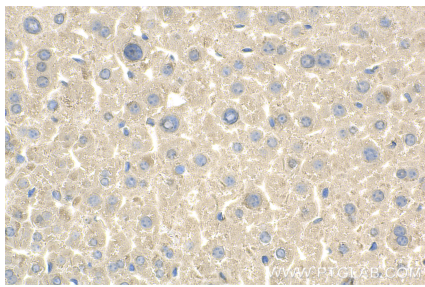
Selected Validation Data



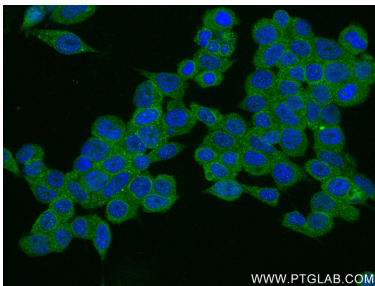
Various lysates were subjected to SDS PAGE followed by western blot with 83663-2-RR (PHKG2 antibody) at dilution of 1:5000 incubated at room temperature for 1.5 hours. This data was developed using the same antibody clone with 83663-2-PBS in a different storage buffer formulation.



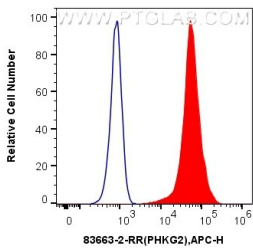
Immunohistochemical analysis of paraffin-embedded mouse liver tissue slide using 83663-2-RR (PHKG2 antibody) at dilution of 1:400 (under 10x lens). Heat mediated antigen retrieval with Tris-EDTA buffer (pH 9.0). This data was developed using the same antibody clone with 83663-2-PBS in a different storage buffer formulation.



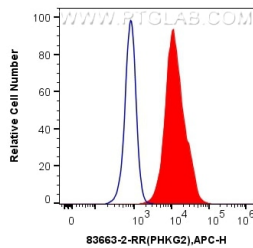
Immunohistochemical analysis of paraffin-embedded mouse liver tissue slide using 83663-2-RR (PHKG2 antibody) at dilution of 1:400 (under 40x lens). Heat mediated antigen retrieval with Tris-EDTA buffer (pH 9.0). This data was developed using the same antibody clone with 83663-2-PBS in a different storage buffer formulation.



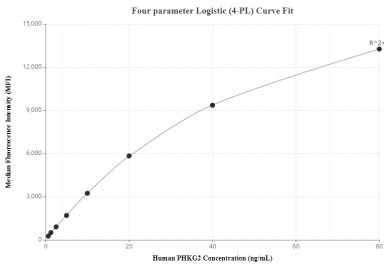
Immunofluorescent analysis of (-20°C Ethanol) fixed HEK-293 cells using PHKG2 antibody (83663-2-RR, Clone: 240643E1) at dilution of 1:200 and CoraLite®488-Conjugated AffiniPure Goat Anti-Rabbit IgG(H+L) (SA00013-2). This data was developed using the same antibody clone with 83663-2-PBS in a different storage buffer formulation.



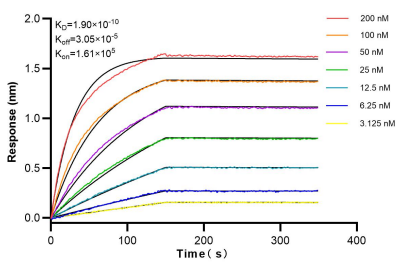
1x10⁶ HEK-293T cells were intracellularly stained with 0.25 ug PHKG2 Recombinant antibody (83663-2-RR, Clone:240643E1) and APC-Conjugated AffiniPure Goat Anti-Rabbit IgG(H+L)(red), or 0.25 ug Isotype Control (blue). Cells were fixed with 4% PFA and permeabilized with Flow Cytometry Perm Buffer (PF00011-C). This data was developed using the same antibody clone with 83663-2-PBS in a different storage buffer formulation.



1x10⁶ HepG2 cells were intracellularly stained with 0.25 ug PHKG2 Recombinant antibody (83663-2-RR, Clone:240643E1) and APC-Conjugated AffiniPure Goat Anti-Rabbit IgG(H+L)(red), or 0.25 ug Isotype Control (blue). Cells were fixed with 4% PFA and permeabilized with Flow Cytometry Perm Buffer (PF00011-C). This data was developed using the same antibody clone with 83663-2-PBS in a different storage buffer formulation.



Cytometric bead array standard curve of MP00632-2, PHKG2 Recombinant Matched Antibody Pair, PBS Only. Capture antibody: 83663-4-PBS. Detection antibody: 83663-2-PBS. Standard: Ag6829. Range: 0.625-80 ng/mL



Biolayer interferometry (BLI) kinetic assays of 83663-2-RR against Human PHKG2 were performed. The affinity constant is 1.90 nM.