

For Research Use Only

FTCD Recombinant antibody, PBS Only (Capture)

Catalog Number: 83664-2-PBS



Basic Information

Catalog Number: 83664-2-PBS	GenBank Accession Number: BC136395	Purification Method: Protein A purification
Size: 100ug , Concentration: 1 mg/ml by Nanodrop;	GeneID (NCBI): 10841	CloneNo.: 240654G9
Source: Rabbit	UNIPROT ID: O95954	
Isotype: IgG	Full Name: formiminotransferase cyclodeaminase	
Immunogen Catalog Number: AG16646	Calculated MW: 541 aa, 59 kDa	
	Observed MW: 58 kDa	

Applications

Tested Applications:
WB, Cytometric bead array, Sandwich ELISA, Indirect ELISA, Sample test

Species Specificity:
human, mouse, rat

Product Information

83664-2-PBS targets FTCD as part of a matched antibody pair:

MP00636-1: 83664-2-PBS capture and 83664-3-PBS detection (validated in Cytometric bead array)

MP00636-3: 83664-2-PBS capture and 83664-4-PBS detection (validated in Sandwich ELISA)

Unconjugated rabbit recombinant monoclonal antibody in PBS only (BSA and azide free) storage buffer at a concentration of 1 mg/mL, ready for conjugation. Created using Proteintech's proprietary in-house recombinant technology. Recombinant production enables unrivalled batch-to-batch consistency, easy scale-up, and future security of supply.

This conjugation ready format makes antibodies ideal for use in many applications including: ELISAs, multiplex assays requiring matched pairs, mass cytometry, and multiplex imaging applications. Antibody use should be optimized by the end user for each application and assay.

Background Information

FTCD (formimidoyltransferase cyclodeaminase) is critical for the catabolism of histidine, a . This process is one-carbon units that can enter the one-carbon/folate cycle, which provides methyl groups for arsenic metabolism (PMID: 30893314). In addition, FTCD could serve as a predictive and prognostic marker for patients with HCC (PMID: 37675273).

Storage

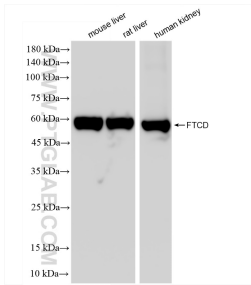
Storage:
Store at -80°C.

Storage Buffer:
PBS Only

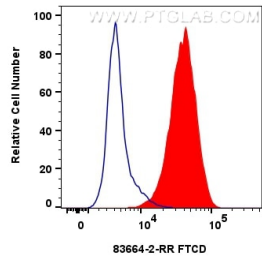
For technical support and original validation data for this product please contact:
T: 1 (888) 4PTGLAB (1-888-478-4522) (toll free in USA), or 1(312) 455-8498 (outside USA)
E: proteintech@ptglab.com
W: ptglab.com

This product is exclusively available under Proteintech Group brand and is not available to purchase from any other manufacturer.

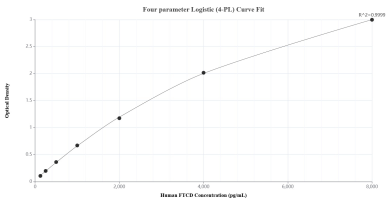
Selected Validation Data



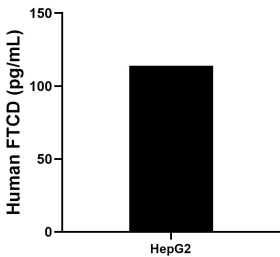
Various lysates were subjected to SDS PAGE followed by western blot with 83664-2-RR (FTCD antibody) at dilution of 1:6000 incubated at room temperature for 1.5 hours. This data was developed using the same antibody clone with 83664-2-PBS in a different storage buffer formulation.



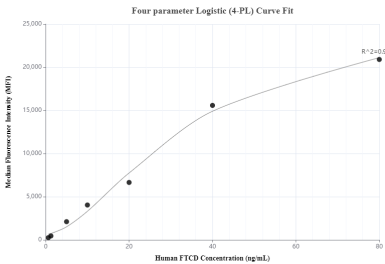
1x10⁶ HepG2 cells were intracellularly stained with 0.25 ug FTCD Recombinant antibody (83664-2-RR, Clone:240654G9) and CoraLite®488-Conjugated Goat Anti-Rabbit IgG(H+L) (SA00013-2)(red), or 0.25 ug Rabbit IgG control Rabbit PolyAb (30000-O-AP) (blue). Cells were fixed with 4% PFA and permeabilized with Flow Cytometry Perm Buffer (PF00011-C). This data was developed using the same antibody clone with 83664-2-PBS in a different storage buffer formulation.



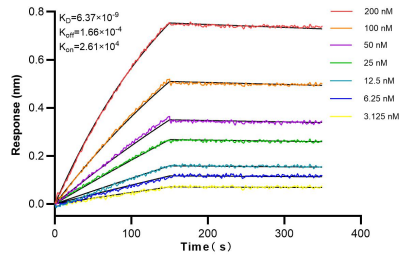
Sandwich ELISA standard curve of MP00636-3, Human FTCD Recombinant Matched Antibody Pair - PBS only. 83664-2-PBS was coated to a plate as the capture antibody and incubated with serial dilutions of standard Ag16646. 83664-4-PBS was HRP conjugated as the detection antibody. Range: 125-8000 pg/ mL.



The mean FTCD concentration was determined to be 114.0 pg/mL in HepG2 cell extract based on a 3.0 mg/mL extract load.



Cytometric bead array standard curve of MP00636-1, FTCD Recombinant Matched Antibody Pair, PBS Only. Capture antibody: 83664-2-PBS. Detection antibody: 83664-3-PBS. Standard: Ag16646. Range: 0.625-80 ng/ mL.



Biolayer interferometry (BLI) kinetic assays of 83664-2-RR against Human FTCD were performed. The affinity constant is 6.37 nM.