

For Research Use Only

# SLC30A2 Recombinant antibody, PBS Only

Catalog Number: 83666-1-PBS



## Basic Information

Catalog Number:

83666-1-PBS

Size:

100ug , Concentration: 1 mg/ml by Nanodrop;

Source:

Rabbit

Isotype:

IgG

Immunogen Catalog Number:

AG8232

GenBank Accession Number:

BC006251

GeneID (NCBI):

7780

UNIPROT ID:

Q9BRI3

Full Name:

solute carrier family 30 (zinc transporter), member 2

Calculated MW:

323 aa, 35 kDa

Purification Method:

Protein A purification

CloneNo.:

240405E3

## Applications

Tested Applications:

WB, FC (Intra), ELISA

Species Specificity:

human

## Storage

Storage:

Store at -80°C.

Storage Buffer:

PBS Only

For technical support and original validation data for this product please contact:

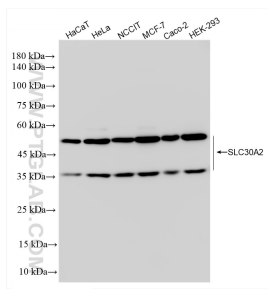
T: 1 (888) 4PTGLAB (1-888-478-4522) (toll free in USA), or 1(312) 455-8498 (outside USA)

E: [proteintech@ptglab.com](mailto:proteintech@ptglab.com)

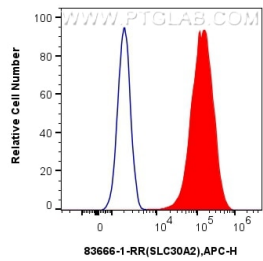
W: [ptglab.com](http://ptglab.com)

This product is exclusively available under Proteintech Group brand and is not available to purchase from any other manufacturer.

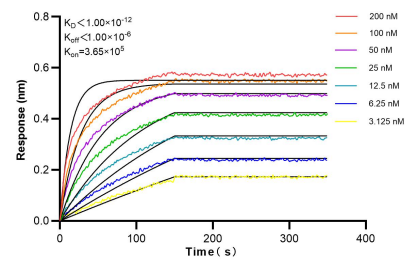
## Selected Validation Data



Various lysates were subjected to SDS PAGE followed by western blot with 83666-1-RR (SLC30A2 antibody) at dilution of 1:10000 incubated at room temperature for 1.5 hours. This data was developed using the same antibody clone with 83666-1-PBS in a different storage buffer formulation.



1x10<sup>6</sup> HeLa cells were intracellularly stained with 0.25 ug SLC30A2 Recombinant antibody (83666-1-RR, Clone:240405E3) and APC-Conjugated AffiniPure Goat Anti-Rabbit IgG(H+L)(red), or 0.25 ug Isotype Control (blue). Cells were fixed with 4% PFA and permeabilized with Flow Cytometry Perm Buffer (PF00011-C). This data was developed using the same antibody clone with 83666-1-PBS in a different storage buffer formulation.



Biolayer interferometry (BLI) kinetic assays of 83666-1-RR against Human SLC30A2 were performed. The affinity constant is below 1 pM.