

For Research Use Only

SLC30A2 Recombinant antibody

Catalog Number: 83666-1-RR



Basic Information

Catalog Number:

83666-1-RR

Size:

100ul, Concentration: 1000 ug/ml by Nanodrop;

Source:

Rabbit

Isotype:

IgG

Immunogen Catalog Number:

AG8232

GenBank Accession Number:

BC006251

GeneID (NCBI):

7780

UNIPROT ID:

Q9BRI3

Full Name:

solute carrier family 30 (zinc transporter), member 2

Calculated MW:

323 aa, 35 kDa

Observed MW:

35 kDa and 52 kDa

Purification Method:

Protein A purification

CloneNo.:

240405E3

Recommended Dilutions:

WB 1:5000-1:50000

Applications

Tested Applications:

WB, FC (Intra), ELISA

Species Specificity:

human

Positive Controls:

WB : HaCaT cells, HeLa cells, NCCIT cells, MCF-7 cells, Caco-2 cells, HEK-293 cells

Background Information

SLC30A2, also named as the Zn transporter 2 gene (ZnT2), belongs to the cation diffusion facilitator (CDF) transporter (TC 2.A.4) family and SLC30A subfamily. It plays a role in the zinc ion transmembrane transport. Expression of SLC30A2 is restricted to secretory cells, such as acinar pancreatic cells, prostate epithelial cells, placental trophoblasts, Paneth cells, and mammary epithelial cells (MECs). SLC30A2 consists of six transmembrane domains with cytoplasmic N- and C-termini that contain numerous regulatory domains, and function as a homo- or hetero-dimer to transport Zn into vesicles (PMID: 29476070). SLC30A2 has 2 isoforms with the molecular mass of 35 kDa (short isoform) and 41 kDa (long isoform). This antibody detects 2 bands of 35 kDa and 52 kDa (glycosylation form of the long isoform) (PMID: 14608047, PMID: 28174721).

Storage

Storage:

Store at -20°C. Stable for one year after shipment.

Storage Buffer:

PBS with 0.02% sodium azide and 50% glycerol pH 7.3.

Aliquoting is unnecessary for -20°C storage

*** 20ul sizes contain 0.1% BSA

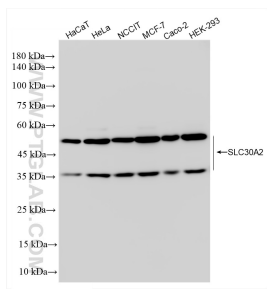
For technical support and original validation data for this product please contact:

T: 1 (888) 4PTGLAB (1-888-478-4522) (toll free in USA), or 1(312) 455-8498 (outside USA)

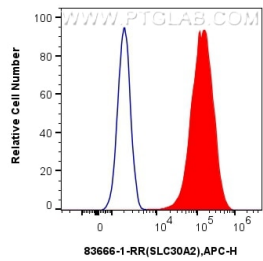
E: proteintech@ptglab.com
W: ptglab.com

This product is exclusively available under Proteintech Group brand and is not available to purchase from any other manufacturer.

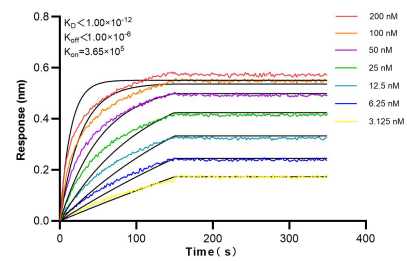
Selected Validation Data



Various lysates were subjected to SDS PAGE followed by western blot with 83666-1-RR (SLC30A2 antibody) at dilution of 1:10000 incubated at room temperature for 1.5 hours.



1x10⁶ HeLa cells were intracellularly stained with 0.25 ug SLC30A2 Recombinant antibody (83666-1-RR, Clone:240405E3) and APC-Conjugated AffiniPure Goat Anti-Rabbit IgG(H+L)(red), or 0.25 ug Isotype Control (blue). Cells were fixed with 4% PFA and permeabilized with Flow Cytometry Perm Buffer (PF00011-C).



Biolayer interferometry (BLI) kinetic assays of 83666-1-RR against Human SLC30A2 were performed. The affinity constant is below 1 pM.