

For Research Use Only

# UQCRC1 Recombinant antibody

Catalog Number: 83671-2-RR



## Basic Information

Catalog Number:	83671-2-RR	GenBank Accession Number:	BC009586	Purification Method:	Protein A purification
Size:	100ul , Concentration: 1000 ug/ml by Nanodrop;	GeneID (NCBI):	7384	CloneNo.:	240507A6
Source:	Rabbit	UNIPROT ID:	P31930	Recommended Dilutions:	WB 1:5000-1:50000 IHC 1:1000-1:4000
Isotype:	IgG	Full Name:	ubiquinol-cytochrome c reductase core protein I		
Immunogen Catalog Number:	AG16322	Calculated MW:	480 aa, 53 kDa		
		Observed MW:	45 kDa		

## Applications

### Tested Applications:

WB, IHC, ELISA

### Species Specificity:

human, mouse, rat

**Note-IHC: suggested antigen retrieval with TE buffer pH 9.0; (\*) Alternatively, antigen retrieval may be performed with citrate buffer pH 6.0**

### Positive Controls:

WB : HeLa cells, L02 cells, HepG2 cells, mouse brain tissue, mouse liver tissue, rat brain tissue, rat liver tissue

IHC : human stomach cancer tissue,

## Background Information

UQCRC1(Cytochrome b-c1 complex subunit 1, mitochondrial), also named as QCR1 and UQCR1, is a ubunit of the cytochrome bc1 complex (complex III) of the mitochondrial respiratory chain, may mediate the formation of the complex between cytochromes c and c1. The gene encodes a 53 kDa protein with a 34 amino acids transit peptide. It is associated with apoptosis or inhibition of cancer cell growth.

## Storage

### Storage:

Store at -20°C. Stable for one year after shipment.

### Storage Buffer:

PBS with 0.02% sodium azide and 50% glycerol pH 7.3.

Aliquoting is unnecessary for -20°C storage

\*\*\* 20ul sizes contain 0.1% BSA

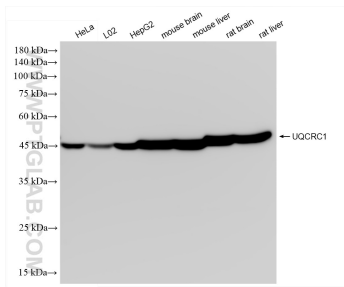
For technical support and original validation data for this product please contact:

T: 1 (888) 4PTGLAB (1-888-478-4522) (toll free in USA), or 1(312) 455-8498 (outside USA)

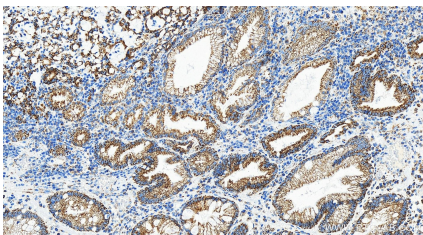
E: [proteintech@ptglab.com](mailto:proteintech@ptglab.com)  
W: [ptglab.com](http://ptglab.com)

This product is exclusively available under Proteintech Group brand and is not available to purchase from any other manufacturer.

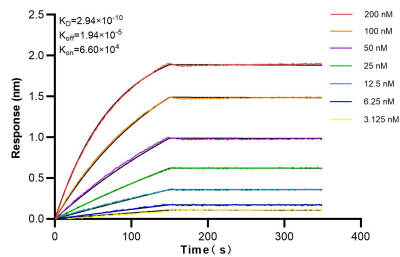
## Selected Validation Data



Various lysates were subjected to SDS PAGE followed by western blot with 83671-2-RR (UQCRC1 antibody) at dilution of 1:10000 incubated at room temperature for 1.5 hours.



Immunohistochemical analysis of paraffin-embedded human stomach cancer tissue slide using 83671-2-RR (UQCRC1 antibody) at dilution of 1:2000 (under 20x lens). Heat mediated antigen retrieval with Tris-EDTA buffer(pH9).



Biolayer interferometry (BLI) kinetic assays of 83671-2-RR against Human UQCRC1 were performed. The affinity constant is 0.294 nM.