

For Research Use Only

SCTR Recombinant antibody, PBS Only

Catalog Number: 83675-6-PBS



Basic Information

Catalog Number:

83675-6-PBS

Size:

100ug, Concentration: 1 mg/ml by Nanodrop;

Source:

Rabbit

Isotype:

IgG

Immunogen Catalog Number:

AG5371

GenBank Accession Number:

BC035757

GeneID (NCBI):

6344

UNIPROT ID:

P47872

Full Name:

SCTR

Calculated MW:

440 aa, 50 kDa

Observed MW:

45-50 kDa

Purification Method:

Protein A purification

CloneNo.:

240675E6

Applications

Tested Applications:

WB, IF/ICC, Indirect ELISA

Species Specificity:

human

Background Information

SCTR is a member of the family B G protein-coupled receptors. SCTR is a receptor for SCT, a gastrointestinal peptide hormone secreted by the S cells of the duodenum. SCT regulates water homeostasis throughout the body and influences the environment of the duodenum by regulating SCT in the stomach and pancreas. Studies suggest that SCT can act as a neuropeptide within the central nervous system (CNS), thus SCTR may regulate the function of the CNS.

Storage

Storage:

Store at -80°C.

Storage Buffer:

PBS Only

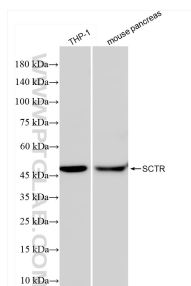
For technical support and original validation data for this product please contact:

T: 1 (888) 4PTGLAB (1-888-478-4522) (toll free in USA), or 1(312) 455-8498 (outside USA)

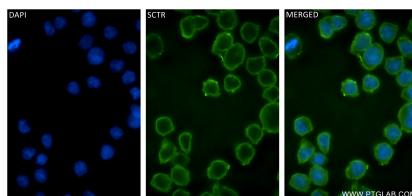
E: proteintech@ptglab.com
W: ptglab.com

This product is exclusively available under Proteintech Group brand and is not available to purchase from any other manufacturer.

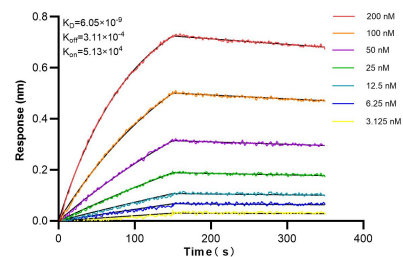
Selected Validation Data



Various lysates were subjected to SDS PAGE followed by western blot with 83675-6-RR (SCTR antibody) at dilution of 1:10000 incubated at room temperature for 1.5 hours. This data was developed using the same antibody clone with 83675-6-PBS in a different storage buffer formulation.



Immunofluorescent analysis of (4% PFA) fixed THP-1 cells using SCTR antibody (83675-6-RR, Clone: 240675E6) at dilution of 1:200 and CoraLite® 488-Conjugated Goat Anti-Rabbit IgG(H+L) (SA00013-2). This data was developed using the same antibody clone with 83675-6-PBS in a different storage buffer formulation.



Biolayer interferometry (BLI) kinetic assays of 83675-6-RR against Human SCTR were performed. The affinity constant is 6.05 nM.