

For Research Use Only

SCTR Recombinant antibody

Catalog Number: 83675-6-RR



Basic Information

Catalog Number: 83675-6-RR	GenBank Accession Number: BC035757	Purification Method: Protein A purification
Size: 100ul , Concentration: 1000 µg/ml by Nanodrop;	GeneID (NCBI): 6344	CloneNo.: 240675E6
Source: Rabbit	UNIPROT ID: P47872	Recommended Dilutions: WB 1:5000-1:50000 IF/ICC 1:50-1:500
Isotype: IgG	Full Name: SCTR	
Immunogen Catalog Number: AG5371	Calculated MW: 440 aa, 50 kDa	
	Observed MW: 45-50 kDa	

Applications

Tested Applications: WB, IF/ICC, ELISA	Positive Controls:
Species Specificity: human	WB : THP-1 cells, mouse pancreas tissue IF/ICC : THP-1 cells,

Background Information

SCTR is a member of the family B G protein-coupled receptors. SCTR is a receptor for SCT, a gastrointestinal peptide hormone secreted by the S cells of the duodenum. SCT regulates water homeostasis throughout the body and influences the environment of the duodenum by regulating SCT in the stomach and pancreas. Studies suggest that SCT can act as a neuropeptide within the central nervous system (CNS), thus SCTR may regulate the function of the CNS.

Storage

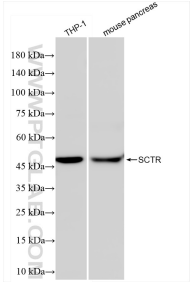
Storage:
Store at -20°C. Stable for one year after shipment.
Storage Buffer:
PBS with 0.02% sodium azide and 50% glycerol pH 7.3.
Aliquoting is unnecessary for -20°C storage

*** 20ul sizes contain 0.1%BSA

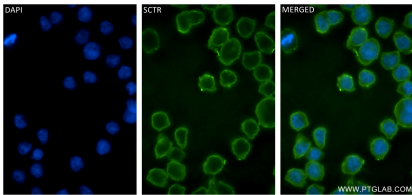
For technical support and original validation data for this product please contact:
T: 1 (888) 4PTGLAB (1-888-478-4522) (toll free in USA), or 1(312) 455-8498 (outside USA)
E: proteintech@ptglab.com
W: ptglab.com

This product is exclusively available under Proteintech Group brand and is not available to purchase from any other manufacturer.

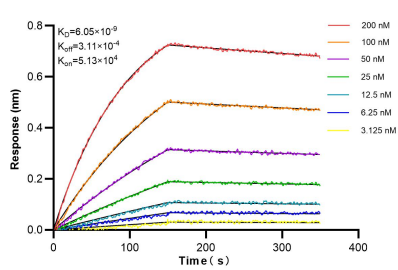
Selected Validation Data



Various lysates were subjected to SDS PAGE followed by western blot with 83675-6-RR (SCTR antibody) at dilution of 1:10000 incubated at room temperature for 1.5 hours.



Immunofluorescent analysis of (4% PFA) fixed THP-1 cells using SCTR antibody (83675-6-RR, Clone: 240675E6) at dilution of 1:200 and CoraLite® 488-Conjugated Goat Anti-Rabbit IgG(H+L) (SA00013-2).



Biolayer interferometry (BLI) kinetic assays of 83675-6-RR against Human SCTR were performed. The affinity constant is 6.05 nM.