

For Research Use Only

SLC4A7/NBCn1 Recombinant monoclonal antibody

Catalog Number:83676-5-RR



Basic Information

Catalog Number: 83676-5-RR	GenBank Accession Number: NM_003615	Purification Method: Protein A purification
Size: 100ul , Concentration: 1000 µg/ml by Nanodrop;	GeneID (NCBI): 9497	CloneNo.: 252520E8
Source: Rabbit	UNIPROT ID: Q9Y6M7	Recommended Dilutions: WB: 1:5000-1:50000
Isotype: IgG	Full Name: solute carrier family 4, sodium bicarbonate cotransporter, member 7	
	Calculated MW: 136 kDa	
	Observed MW: 150-170 kDa	

Applications

Tested Applications: WB, ELISA	Positive Controls: WB : BGC-823 cells, HeLa cells, HEK-293 cells
Species Specificity: human	

Background Information

SLC4A7 also known as NBCn1, NBC3, NBC2, is an electroneutral Na⁽⁺⁾/HCO₃⁽⁻⁾ cotransporter (PMID: 14736710). SLC4A7 mediates the coupled movement of sodium and bicarbonate ions across the plasma membrane. SLC4A7 plays a key role in macrophage acidification, mediating bicarbonate import into the cytoplasm which is crucial for net acid extrusion and maintenance of cytoplasmic pH during phagocytosis (PubMed:29779931). SLC4A7 is expressed in testis, spleen, and retina. SLC4A7 may be a major regulator of extracellular pH of retina where light stimulation produces an extracellular alkalization and may contribute as a solute transporter to the prevention of retinal detachment(PMID: 9610397). The molecular weight of SLC4A7/NBCn1 detected at 150-170 kDa may be due to glycosylation modification.

Storage

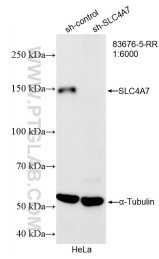
Storage:
Store at -20°C. Stable for one year after shipment.
Storage Buffer:
PBS with 0.02% sodium azide and 50% glycerol, pH7.3
Aliquoting is unnecessary for -20°C storage

*** 20ul sizes contain 0.1% BSA

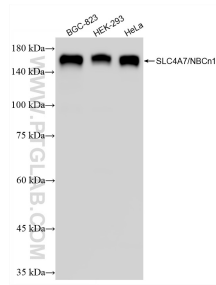
For technical support and original validation data for this product please contact:
T: 1 (888) 4PTGLAB (1-888-478-4522) (toll free in USA), or 1(312) 455-8498 (outside USA) E: proteintech@ptglab.com
W: ptglab.com

This product is exclusively available under Proteintech Group brand and is not available to purchase from any other manufacturer.

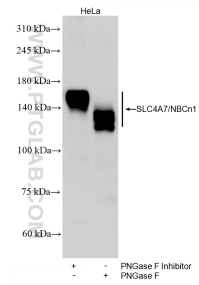
Selected Validation Data



WB result of SLC4A7/NBCn1 antibody (83676-5-RR; 1:6000; incubated at room temperature for 1.5 hours) with sh-Control and sh-SLC4A7/NBCn1 transfected HeLa cells.



Various lysates were subjected to SDS PAGE followed by western blot with 83676-5-RR (SLC4A7/NBCn1 antibody) at dilution of 1:10000 incubated at room temperature for 1.5 hours.



HeLa cells were subjected to SDS PAGE followed by western blot with 83676-5-RR (SLC4A7/NBCn1 antibody) at dilution of 1:10000 incubated at room temperature for 1.5 hours.