

For Research Use Only

PBRM1 Recombinant antibody

Catalog Number: 83677-2-RR



Basic Information

Catalog Number:

83677-2-RR

Size:

100ul , Concentration: 1000 ug/ml by Nanodrop;

Source:

Rabbit

Isotype:

IgG

Immunogen Catalog Number:

AG33623

GenBank Accession Number:

BC015323

GeneID (NCBI):

55193

UNIPROT ID:

Q86U86

Full Name:

polybromo 1

Calculated MW:

180 kDa

Observed MW:

180-195 kDa

Purification Method:

Protein A purification

CloneNo.:

240655H5

Recommended Dilutions:

WB 1:2000-1:10000

IF/ICC 1:500-1:2000

Applications

Tested Applications:

WB, IF/ICC, ELISA

Species Specificity:

human, mouse

Positive Controls:

WB : Jurkat cells, K-562 cells, HeLa cells, U2OS cells, NIH/3T3 cells

IF/ICC : HeLa cells,

Background Information

PBRM1, also named hPB1 BAF180 and Polybromo-1D, acts as a negative regulator of cell proliferation. PBRM1 is the second major mutated clear cell RCC cancer gene after VHL. PBRM1 loss is associated with low grade features.

Storage

Storage:

Store at -20°C. Stable for one year after shipment.

Storage Buffer:

PBS with 0.02% sodium azide and 50% glycerol pH 7.3.

Aliquoting is unnecessary for -20°C storage

*** 20ul sizes contain 0.1% BSA

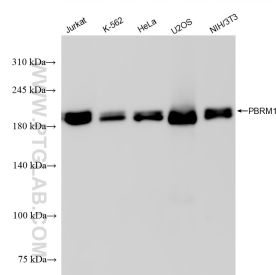
For technical support and original validation data for this product please contact:

T: 1 (888) 4PTGLAB (1-888-478-4522) (toll free in USA), or 1(312) 455-8498 (outside USA)

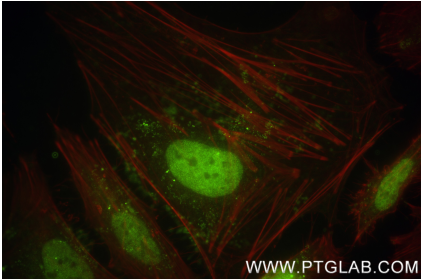
E: proteintech@ptglab.com
W: ptglab.com

This product is exclusively available under Proteintech Group brand and is not available to purchase from any other manufacturer.

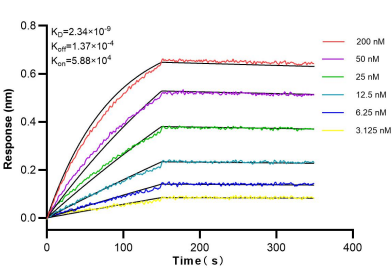
Selected Validation Data



Various lysates were subjected to SDS PAGE followed by western blot with 83677-2-RR (PBRM1 antibody) at dilution of 1:5000 incubated at room temperature for 1.5 hours.



Immunofluorescent analysis of (4% PFA) fixed HeLa cells using PBRM1 antibody (83677-2-RR, Clone: 240655H5) at dilution of 1:1000 and CoraLite® 488-Conjugated Goat Anti-Rabbit IgG(H+L) (SA00013-2), CL594-Phalloidin (red).



Biolayer interferometry (BLI) kinetic assays of 83677-2-RR against Human PBRM1 were performed. The affinity constant is 2.34 nM.