

For Research Use Only

Beta-2-Microglobulin Recombinant antibody, PBS Only

Catalog Number: 83683-8-PBS



Basic Information

Catalog Number:

83683-8-PBS

Size:

100ug, Concentration: 1 mg/ml by Nanodrop;

Source:

Rabbit

Isotype:

IgG

Immunogen Catalog Number:

EG2284

GenBank Accession Number:

BC032589

GeneID (NCBI):

567

ENSEMBL Gene ID:

ENSG00000166710

UNIPROT ID:

P61769

Full Name:

beta-2-microglobulin

Calculated MW:

119 aa, 14 kDa

Observed MW:

12 kDa

Purification Method:

Protein A purification

CloneNo.:

241308F6

Applications

Tested Applications:

WB, IF/ICC, Indirect ELISA

Species Specificity:

human

Background Information

Beta-2-microglobulin (B2M) is a component of MHC class I molecules, which are present on the surface of nearly all nucleated cells. It can be found in body fluids under physiologic conditions due to shedding from cell surfaces or intracellular release. B2M has various biological functions, including antigen presentation. Investigations reveal that increased synthesis and release of B2M are present in several malignant diseases.

Storage

Storage:

Store at -80°C.

Storage Buffer:

PBS only, pH7.3

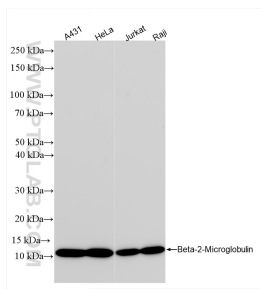
For technical support and original validation data for this product please contact:

T: 1 (888) 4PTGLAB (1-888-478-4522) (toll free in USA), or 1(312) 455-8498 (outside USA)

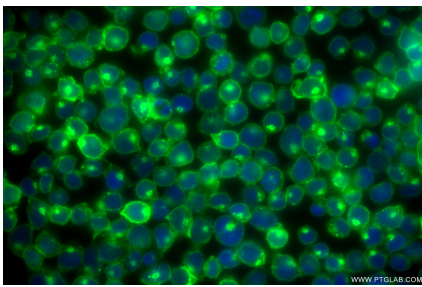
E: proteintech@ptglab.com
W: ptglab.com

This product is exclusively available under Proteintech Group brand and is not available to purchase from any other manufacturer.

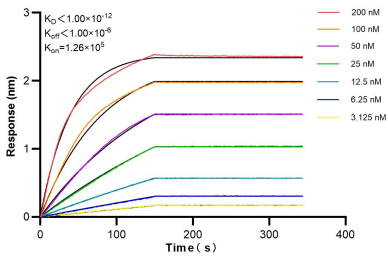
Selected Validation Data



Various lysates were subjected to SDS PAGE followed by western blot with 83683-8-RR (Beta-2-Microglobulin antibody) at dilution of 1:5000 incubated at room temperature for 1.5 hours. This data was developed using the same antibody clone with 83683-8-PBS in a different storage buffer formulation.



Immunofluorescent analysis of (4% PFA) fixed Jurkat cells using Beta-2-Microglobulin antibody (83683-8-RR, Clone: 241308F6) at dilution of 1:400 and CoraLite® 488-Conjugated Goat Anti-Rabbit IgG(H+L) (SA00013-2). This data was developed using the same antibody clone with 83683-8-PBS in a different storage buffer formulation.



Biolayer interferometry (BLI) kinetic assays of 83683-8-RR against Human Beta-2-Microglobulin were performed. The affinity constant is below 1 pM.