

For Research Use Only

Chitinase 3-like 1/CHI3L1 Recombinant monoclonal antibody, PBS Only (Detector)



Catalog Number: 83685-5-PBS

Basic Information

Catalog Number: 83685-5-PBS	GenBank Accession Number: NM_001276.4	Purification Method: Protein A purification
Size: 100ug , Concentration: 1 mg/ml by Nanodrop;	GeneID (NCBI): 1116	CloneNo.: 253193B1
Source: Rabbit	UNIPROT ID: P36222	
Isotype: IgG	Full Name: chitinase 3-like 1 (cartilage glycoprotein-39)	
Immunogen Catalog Number: EG4992	Calculated MW: 43 kDa	

Applications

Tested Applications:
Cytometric bead array, Indirect ELISA

Species Specificity:
human

Product Information

83685-5-PBS targets Chitinase 3-like 1/CHI3L1 as part of a matched antibody pair:

MP00663-4: 83685-6-PBS capture and 83685-5-PBS detection (validated in Cytometric bead array)

Unconjugated rabbit recombinant monoclonal antibody in PBS only (BSA and azide free) storage buffer at a concentration of 1 mg/mL, ready for conjugation. Created using Proteintech's proprietary in-house recombinant technology. Recombinant production enables unrivalled batch-to-batch consistency, easy scale-up, and future security of supply.

This conjugation ready format makes antibodies ideal for use in many applications including: ELISAs, multiplex assays requiring matched pairs, mass cytometry, and multiplex imaging applications. Antibody use should be optimized by the end user for each application and assay.

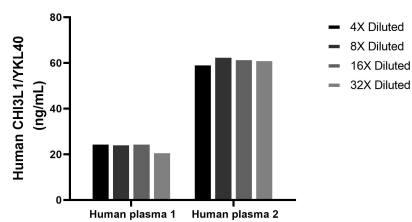
Storage

Storage:
Store at -80°C.
Storage Buffer:
PBS only, pH7.3

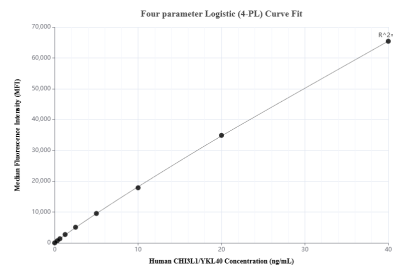
For technical support and original validation data for this product please contact:
T: 1 (888) 4PTGLAB (1-888-478-4522) (toll free in USA), or 1(312) 455-8498 (outside USA)
E: proteintech@ptglab.com
W: ptglab.com

This product is exclusively available under Proteintech Group brand and is not available to purchase from any other manufacturer.

Selected Validation Data



The mean CHI3L1/YKL40 concentration was determined to be 24.2 ng/mL in human plasma 1, 61.8 ng/mL in human plasma 2.



Cytometric bead array standard curve of MP00663-4, CHI3L1/YKL40 Recombinant Matched Antibody Pair, PBS Only. Capture antibody: 83685-6-PBS. Detection antibody: 83685-5-PBS. Standard: Eg4992. Range: 0.312-40 ng/mL.