

For Research Use Only

# Chitinase 3-like 1/CHI3L1 Recombinant monoclonal antibody, PBS Only (Capture)

Catalog Number: 83685-6-PBS



## Basic Information

<b>Catalog Number:</b> 83685-6-PBS	<b>GenBank Accession Number:</b> NM_001276.4	<b>Purification Method:</b> Protein A purification
<b>Size:</b> 100ug , Concentration: 1 mg/ml by Nanodrop;	<b>GeneID (NCBI):</b> 1116	<b>CloneNo.:</b> 253193A1
<b>Source:</b> Rabbit	<b>UNIPROT ID:</b> P36222	
<b>Isotype:</b> IgG	<b>Full Name:</b> chitinase 3-like 1 (cartilage glycoprotein-39)	
<b>Immunogen Catalog Number:</b> EG4992	<b>Calculated MW:</b> 43 kDa	

## Applications

**Tested Applications:**  
Cytometric bead array, Indirect ELISA

**Species Specificity:**  
human

## Product Information

83685-6-PBS targets Chitinase 3-like 1/CHI3L1 as part of a matched antibody pair.

MP00663-4: 83685-6-PBS capture and 83685-5-PBS detection (validated in Cytometric bead array)

Unconjugated rabbit recombinant monoclonal antibody in PBS only (BSA and azide free) storage buffer at a concentration of 1 mg/mL, ready for conjugation. Created using Proteintech's proprietary in-house recombinant technology. Recombinant production enables unrivalled batch-to-batch consistency, easy scale-up, and future security of supply.

This conjugation ready format makes antibodies ideal for use in many applications including: ELISAs, multiplex assays requiring matched pairs, mass cytometry, and multiplex imaging applications. Antibody use should be optimized by the end user for each application and assay.

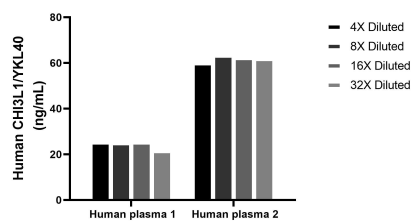
## Storage

**Storage:**  
Store at -80°C.  
**Storage Buffer:**  
PBS only, pH7.3

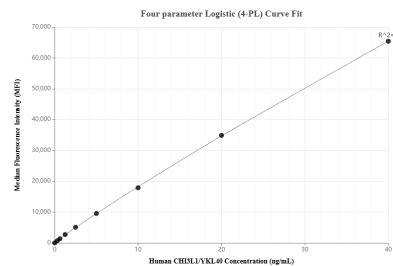
For technical support and original validation data for this product please contact:  
T: 1 (888) 4PTGLAB (1-888-478-4522) (toll free in USA), or 1(312) 455-8498 (outside USA)  
E: [proteintech@ptglab.com](mailto:proteintech@ptglab.com)  
W: [ptglab.com](http://ptglab.com)

This product is exclusively available under Proteintech Group brand and is not available to purchase from any other manufacturer.

## Selected Validation Data



The mean CHI3L1/YKL40 concentration was determined to be 24.2 ng/mL in human plasma 1, 61.8 ng/mL in human plasma 2.



Cytometric bead array standard curve of MP00663-4, CHI3L1/YKL40 Recombinant Matched Antibody Pair, PBS Only. Capture antibody: 83685-6-PBS. Detection antibody: 83685-5-PBS. Standard: Eg4992. Range: 0.312-40 ng/mL.