

For Research Use Only

# FGFR3 Recombinant antibody, PBS Only (Capture/Detector)

Catalog Number: 83701-3-PBS



## Basic Information

<b>Catalog Number:</b> 83701-3-PBS	<b>GenBank Accession Number:</b> NM_001163213.1	<b>Purification Method:</b> Protein A purification
<b>Size:</b> 100ug , Concentration: 1 mg/ml by Nanodrop;	<b>GeneID (NCBI):</b> 2261	<b>CloneNo.:</b> 240758E10
<b>Source:</b> Rabbit	<b>UNIPROT ID:</b> P22607-2	
<b>Isotype:</b> IgG	<b>Full Name:</b> fibroblast growth factor receptor 3	
	<b>Calculated MW:</b> 88kd	

## Applications

**Tested Applications:**  
Cytometric bead array, Sandwich ELISA, Indirect ELISA, Sample test

**Species Specificity:**  
human

## Product Information

83701-3-PBS targets FGFR3 as part of a matched antibody pair.

MP00407-3: 83701-4-PBS capture and 83701-3-PBS detection (validated in Cytometric bead array)

MP00407-4: 83701-3-PBS capture and 83701-1-PBS detection (validated in Cytometric bead array, Sandwich ELISA)

Unconjugated rabbit recombinant monoclonal antibody in PBS only (BSA and azide free) storage buffer at a concentration of 1 mg/mL, ready for conjugation. Created using Proteintech's proprietary in-house recombinant technology. Recombinant production enables unrivalled batch-to-batch consistency, easy scale-up, and future security of supply.

This conjugation ready format makes antibodies ideal for use in many applications including: ELISAs, multiplex assays requiring matched pairs, mass cytometry, and multiplex imaging applications. Antibody use should be optimized by the end user for each application and assay.

## Storage

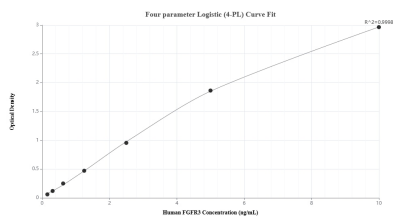
**Storage:**  
Store at -80°C.

**Storage Buffer:**  
PBS Only

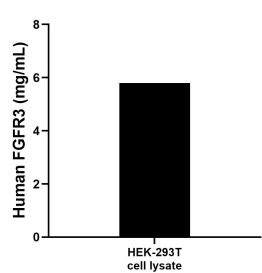
For technical support and original validation data for this product please contact:  
T: 1 (888) 4PTGLAB (1-888-478-4522) (toll free in USA), or 1(312) 455-8498 (outside USA)  
E: [proteintech@ptglab.com](mailto:proteintech@ptglab.com)  
W: [ptglab.com](http://ptglab.com)

This product is exclusively available under Proteintech Group brand and is not available to purchase from any other manufacturer.

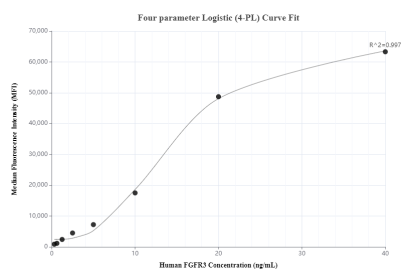
## Selected Validation Data



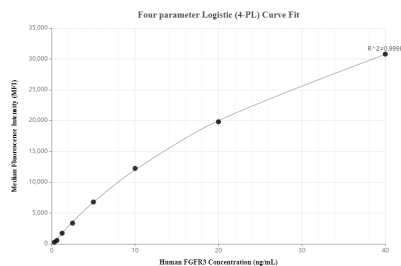
Sandwich ELISA standard curve of MP00407-4, Human FGFR3 Recombinant Matched Antibody Pair - PBS only. 83701-3-PBS was coated to a plate as the capture antibody and incubated with serial dilutions of standard Eg1041. 83701-1-PBS was HRP conjugated as the detection antibody. Range: 0.16-10 ng/mL



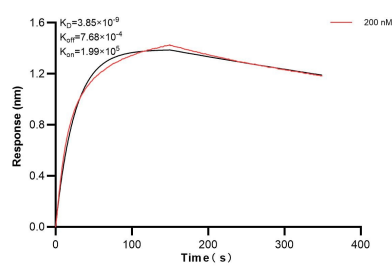
HEK-293T cell lysate was measured. The human FGFR3 concentration was determined to be 5.8 mg/mL in HEK-293T cell lysate.



Cytometric bead array standard curve of MP00407-3, FGFR3 Recombinant Matched Antibody Pair, PBS Only. Capture antibody: 83701-4-PBS. Detection antibody: 83701-3-PBS. Standard: Eg1041. Range: 0.313-40 ng/mL



Cytometric bead array standard curve of MP00407-4, FGFR3 Recombinant Matched Antibody Pair, PBS Only. Capture antibody: 83701-3-PBS. Detection antibody: 83701-1-PBS. Standard: Eg1041. Range: 0.313-40 ng/mL



Biolayer interferometry (BLI) kinetic assay of 83701-3-PBS against Human FGFR3 was performed. The affinity constant is 3.85 nM.