

For Research Use Only

SCF Recombinant antibody

Catalog Number: 83707-2-RR



Basic Information

Catalog Number:

83707-2-RR

Size:

100ul, Concentration: 1000 ug/ml by Nanodrop;

Source:

Rabbit

Isotype:

IgG

GenBank Accession Number:

NM_021843.4

GeneID (NCBI):

60427

UNIPROT ID:

P21581-1

Full Name:

KIT ligand

Calculated MW:

31kDa

Observed MW:

28 kDa, 45 kDa

Purification Method:

Protein A purification

CloneNo.:

240787H1

Recommended Dilutions:

WB 1:5000-1:50000

Applications

Tested Applications:

WB, ELISA

Species Specificity:

human, mouse, rat

Positive Controls:

WB : COLO 320 cells, PC-12 cells, Neuro-2a cells

Background Information

Stem cell factor (SCF) also known as mast cell growth factor, steel factor, and kit ligand, is a hematopoietic growth factor. SCF is a critical protein with key roles in the cell such as hematopoiesis, gametogenesis and melanogenesis. SCF activates multiple signal pathways by binding with c-kit receptor. SCF and its receptor, c-kit ligand (KL), are up-regulated in particular human malignancies including gastrointestinal stromal tumor (GISTs), breast cancer, hematopoietic cell, myeloid leukaemia, and glioma. The SCF/c-KIT system also plays a relevant role in cell fate decision, and its activity is widely known to control cell proliferation, differentiation, survival and apoptosis. SCF is a 35 to 45 kDa monomeric glycoprotein.

Storage

Storage:

Store at -20°C. Stable for one year after shipment.

Storage Buffer:

PBS with 0.02% sodium azide and 50% glycerol pH 7.3.

Aliquoting is unnecessary for -20°C storage

*** 20ul sizes contain 0.1% BSA

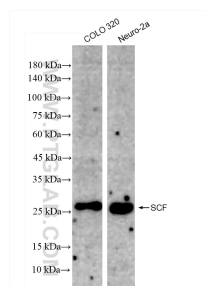
For technical support and original validation data for this product please contact:

T: 1 (888) 4PTGLAB (1-888-478-4522) (toll free in USA), or 1(312) 455-8498 (outside USA)

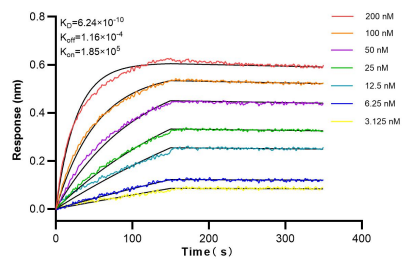
E: proteintech@ptglab.com
W: ptglab.com

This product is exclusively available under Proteintech Group brand and is not available to purchase from any other manufacturer.

Selected Validation Data



Various lysates were subjected to SDS PAGE followed by western blot with 83707-2-RR (SCF antibody) at dilution of 1:10000 incubated at room temperature for 1.5 hours.



Biolayer interferometry (BLI) kinetic assays of 83707-2-RR against Rat SCF were performed. The affinity constant is 0.624 nM.