

For Research Use Only

RAP1A Recombinant antibody

Catalog Number: 83708-1-RR



Basic Information

Catalog Number: 83708-1-RR	GenBank Accession Number: BC014086	Purification Method: Protein A purification
Size: 100ul , Concentration: 1000 ug/ml by Nanodrop;	GeneID (NCBI): 5906	CloneNo.: 240438G5
Source: Rabbit	UNIPROT ID: P62834	Recommended Dilutions: IF/ICC 1:125-1:500
Isotype: IgG	Full Name: RAP1A, member of RAS oncogene family	
Immunogen Catalog Number: AG9488	Calculated MW: 184 aa, 21 kDa	

Applications

Tested Applications: IF/ICC, FC (Intra), ELISA	Positive Controls: IF/ICC : NIH/3T3 cells,
Species Specificity: human, mouse	

Background Information

RAP1A(Ras-related protein Rap-1A), also known as KREV1. Induces morphological reversion of a cell line transformed by a Ras oncogene. The biological roles of RAP1A include inducing neurite outgrowth and embryonic angiogenesis(PMID: 17916086). As one member of RAS oncogene family, it is a widely expressed receptor, with high mRNA expression in many tissues, particularly abundant in the colon. In cells, RAP1A was localized in cytoplasm and cell membrane(PMID: 11359771, PMID: 11359771).

Storage

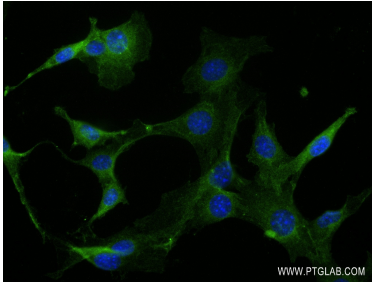
Storage:
Store at -20°C. Stable for one year after shipment.
Storage Buffer:
PBS with 0.02% sodium azide and 50% glycerol pH 7.3.
Aliquoting is unnecessary for -20°C storage

*** 20ul sizes contain 0.1% BSA

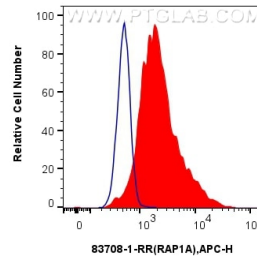
For technical support and original validation data for this product please contact:
T: 1 (888) 4PTGLAB (1-888-478-4522) (toll free in USA), or 1(312) 455-8498 (outside USA)
E: proteintech@ptglab.com
W: ptglab.com

This product is exclusively available under Proteintech Group brand and is not available to purchase from any other manufacturer.

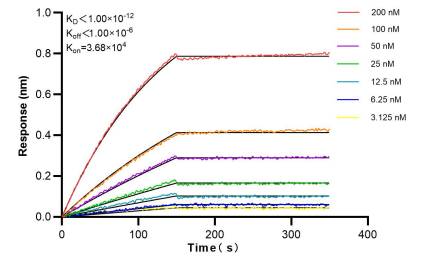
Selected Validation Data



Immunofluorescent analysis of (4% PFA) fixed NIH/3T3 cells using RAP1A antibody (83708-1-RR, Clone: 240438G5) at dilution of 1:250 and CoraLite@488-Conjugated Goat Anti-Mouse IgG(H+L) (SA00013-1).



1×10^6 HeLa cells were intracellularly stained with 0.25 μ g RAP1A Recombinant antibody (83708-1-RR, Clone: 240438G5) and APC-Conjugated Goat Anti-Rabbit IgG(H+L)(red), or 0.25 μ g Isotype Control (blue). Cells were fixed with 4% PFA and permeabilized with Flow Cytometry Perm Buffer (PF00011-C).



Biolayer interferometry (BLI) kinetic assays of 83708-1-RR against Human RAP1A were performed. The affinity constant is below 1 pM.