

For Research Use Only

# RAP1A Recombinant antibody

Catalog Number: 83708-2-RR



## Basic Information

Catalog Number:

83708-2-RR

Size:

100ul, Concentration: 1000 ug/ml by Nanodrop;

Source:

Rabbit

Isotype:

IgG

Immunogen Catalog Number:

AG9488

GenBank Accession Number:

BC014086

GeneID (NCBI):

5906

UNIPROT ID:

P62834

Full Name:

RAP1A, member of RAS oncogene family

Calculated MW:

184 aa, 21 kDa

Observed MW:

21 kDa

Purification Method:

Protein A purification

CloneNo.:

240438E10

Recommended Dilutions:

WB 1:5000-1:50000

## Applications

Tested Applications:

WB, FC (Intra), ELISA

Species Specificity:

human, mouse, rat

Positive Controls:

WB : NIH/3T3 cells, A431 cells, HeLa cells, K-562 cells, human platelet tissue, rat brain tissue

## Background Information

RAP1A(Ras-related protein Rap-1A), also known as KREV1. Induces morphological reversion of a cell line transformed by a Ras oncogene. The biological roles of RAP1A include inducing neurite outgrowth and embryonic angiogenesis(PMID: 17916086). As one member of RAS oncogene family, it is a widely expressed receptor, with high mRNA expression in many tissues, particularly abundant in the colon. In cells, RAP1A was localized in cytoplasm and cell membrane(PMID: 11359771, PMID: 11359771).

## Storage

Storage:

Store at -20°C. Stable for one year after shipment.

Storage Buffer:

PBS with 0.02% sodium azide and 50% glycerol pH 7.3.

Aliquoting is unnecessary for -20°C storage

\*\*\* 20ul sizes contain 0.1% BSA

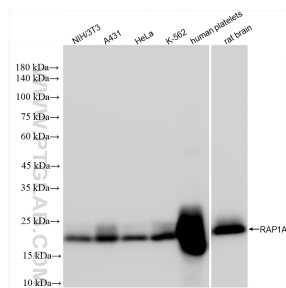
For technical support and original validation data for this product please contact:

T: 1 (888) 4PTGLAB (1-888-478-4522) (toll free in USA), or 1(312) 455-8498 (outside USA)

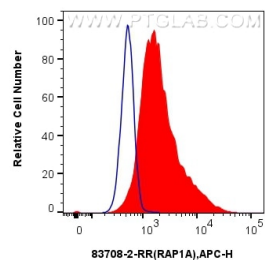
E: [proteintech@ptglab.com](mailto:proteintech@ptglab.com)  
W: [ptglab.com](http://ptglab.com)

This product is exclusively available under Proteintech Group brand and is not available to purchase from any other manufacturer.

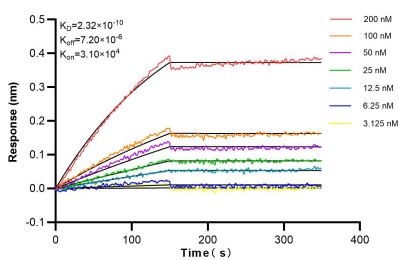
## Selected Validation Data



Various lysates were subjected to SDS PAGE followed by western blot with 83708-2-RR (RAP1A antibody) at dilution of 1:10000 incubated at room temperature for 1.5 hours.



1x10<sup>6</sup> HeLa cells were intracellularly stained with 0.25 ug RAP1A Recombinant antibody (83708-2-RR, Clone:240438E10) and APC-Conjugated Goat Anti-Rabbit IgG(H+L)(red), or 0.25 ug Isotype Control (blue). Cells were fixed with 4% PFA and permeabilized with Flow Cytometry Perm Buffer (PF00011-C).



Biolayer interferometry (BLI) kinetic assays of 83708-2-RR against Human RAP1A were performed. The affinity constant is 0.232 nM.