

For Research Use Only

ULBP2 Recombinant antibody, PBS Only (Capture/Detector)

Catalog Number: 83709-4-PBS



Basic Information

Catalog Number:

83709-4-PBS

Size:

100ug, Concentration: 1 mg/ml by
Nanodrop;

Source:

Rabbit

Isotype:

IgG

GenBank Accession Number:

NM_025217.4

GeneID (NCBI):

80328

UNIPROT ID:

Q9BZM5

Full Name:

UL16 binding protein 2

Calculated MW:

27 kDa

Purification Method:

Protein A purification

CloneNo.:

240413H4

Applications

Tested Applications:

Cytometric bead array, Sandwich ELISA, Indirect ELISA,
Sample test

Species Specificity:

human

Product Information

83709-4-PBS targets ULBP2 as part of a matched antibody pair:

MP01920-1: 83709-2-PBS capture and 83709-4-PBS detection (validated in Cytometric bead array)

MP01920-2: 83709-4-PBS capture and 83709-3-PBS detection (validated in Cytometric bead array, Sandwich ELISA)

Unconjugated rabbit recombinant monoclonal antibody in PBS only (BSA and azide free) storage buffer at a concentration of 1 mg/mL, ready for conjugation. Created using Proteintech's proprietary in-house recombinant technology. Recombinant production enables unrivalled batch-to-batch consistency, easy scale-up, and future security of supply.

This conjugation ready format makes antibodies ideal for use in many applications including: ELISAs, multiplex assays requiring matched pairs, mass cytometry, and multiplex imaging applications. Antibody use should be optimized by the end user for each application and assay.

Storage

Storage:

Store at -80°C.

Storage Buffer:

PBS Only

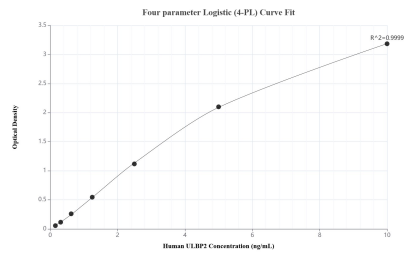
For technical support and original validation data for this product please contact:

T: 1 (888) 4PTGLAB (1-888-478-4522) (toll free
in USA), or 1(312) 455-8498 (outside USA)

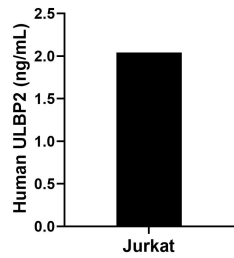
E: proteintech@ptglab.com
W: ptglab.com

This product is exclusively available under Proteintech Group brand and is not available to purchase from any other manufacturer.

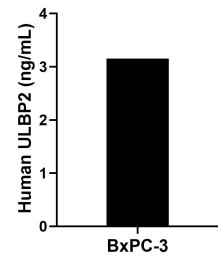
Selected Validation Data



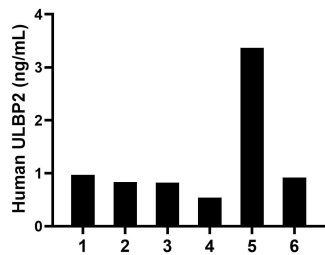
Sandwich ELISA standard curve of MP01920-2, Human ULBP2 Recombinant Matched Antibody Pair - PBS only. 83709-4-PBS was coated to a plate as the capture antibody and incubated with serial dilutions of standard Eg0858. 83709-3-PBS was HRP conjugated as the detection antibody. Range: 0.156-10 ng/mL



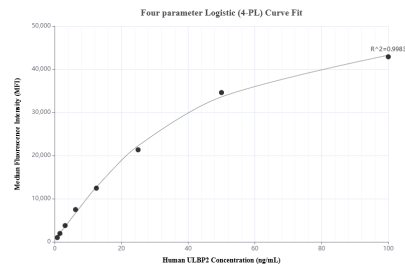
Jurkat were cultured in DMEM supplemented with 10% fetal bovine serum, 2.5 mM L-glutamine, 100 U/mL penicillin, and 100 µg/mL streptomycin sulfate. An aliquot of the cell culture supernate was removed, assayed for human ULBP2, and measured 2.04 ng/mL



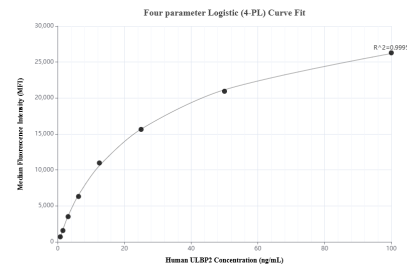
The mean ULBP2 concentration was determined to be 3.15 ng/mL in BxPC-3 cell extract based on a 2.00 mg/mL extract load.



Serum of six individual healthy human donors was measured. The ULBP2 concentration of detected samples was determined to be 1.24 ng/mL with a range of 0.54-3.37 ng/mL



Cytometric bead array standard curve of MP01920-1, ULBP2 Recombinant Matched Antibody Pair, PBS Only. Capture antibody: 83709-2-PBS. Detection antibody: 83709-4-PBS. Standard: Eg0858. Range: 0.781-100 ng/mL



Cytometric bead array standard curve of MP01920-2, ULBP2 Recombinant Matched Antibody Pair, PBS Only. Capture antibody: 83709-4-PBS. Detection antibody: 83709-3-PBS. Standard: Eg0858. Range: 0.781-100 ng/mL