

For Research Use Only

RAE1 Recombinant antibody

Catalog Number: 83712-4-RR



Basic Information

Catalog Number: 83712-4-RR	GenBank Accession Number: BC103754	Purification Method: Protein A purification
Size: 100ul , Concentration: 1000 ug/ml by Nanodrop;	GeneID (NCBI): 8480	CloneNo.: 240861B7
Source: Rabbit	UNIPROT ID: P78406	Recommended Dilutions: WB 1:2000-1:10000 IHC 1:250-1:1000 IF/ICC 1:125-1:500
Isotype: IgG	Full Name: RAE1 RNA export 1 homolog (S. pombe)	
Immunogen Catalog Number: AG12102	Calculated MW: 368 aa, 41 kDa	

Applications

Tested Applications: WB, IHC, IF/ICC, ELISA	Positive Controls:
Species Specificity: human, mouse	WB : HepG2 cells, MCF-7 cells, HeLa cells, HEK-293 cells, BxPC-3 cells, mouse thymus tissue
Note-IHC: suggested antigen retrieval with TE buffer pH 9.0; (*) Alternatively, antigen retrieval may be performed with citrate buffer pH 6.0	IHC : mouse testis tissue, IF/ICC : HepG2 cells,

Background Information

RAE1 acts as a mRNA export factor involved in nucleocytoplasmic transport, it plays a role in mitotic bipolar spindle formation. (PMID: 33849972, MID: 17172455)

Storage

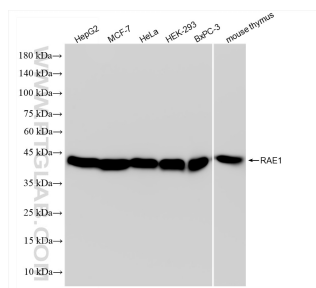
Storage:
Store at -20°C. Stable for one year after shipment.
Storage Buffer:
PBS with 0.02% sodium azide and 50% glycerol pH 7.3.
Aliquoting is unnecessary for -20°C storage

*** 20ul sizes contain 0.1% BSA

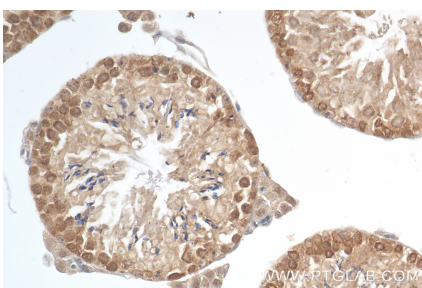
For technical support and original validation data for this product please contact:
T: 1 (888) 4PTGLAB (1-888-478-4522) (toll free in USA), or 1(312) 455-8498 (outside USA)
E: proteintech@ptglab.com
W: ptglab.com

This product is exclusively available under Proteintech Group brand and is not available to purchase from any other manufacturer.

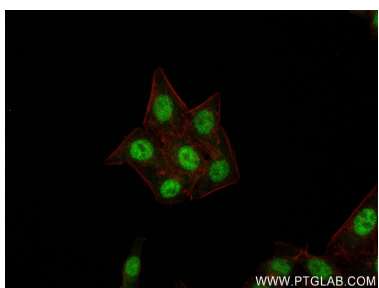
Selected Validation Data



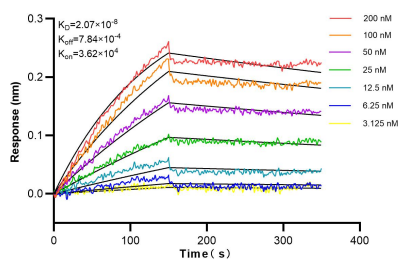
Various lysates were subjected to SDS PAGE followed by western blot with 83712-4-RR (RAE1 antibody) at dilution of 1:5000 incubated at room temperature for 1.5 hours.



Immunohistochemical analysis of paraffin-embedded mouse testis tissue slide using 83712-4-RR (RAE1 antibody) at dilution of 1:500 (under 40x lens). Heat mediated antigen retrieval with Tris-EDTA buffer (pH 9.0).



Immunofluorescent analysis of (4% PFA) fixed HepG2 cells using RAE1 antibody (83712-4-RR, Clone: 240861B7) at dilution of 1:250 and CoraLite®488-Conjugated AffiniPure Goat Anti-Rabbit IgG(H+L) (SA00013-2), CL594-Phalloidin (red).



Biolayer interferometry (BLI) kinetic assays of 83712-4-RR against Human RAE1 were performed. The affinity constant is 20.7 nM.