

For Research Use Only

# Bif-1 Recombinant antibody, PBS Only (Capture)

Catalog Number: 83715-1-PBS



## Basic Information

<b>Catalog Number:</b> 83715-1-PBS	<b>GenBank Accession Number:</b> BC007455	<b>Purification Method:</b> Protein A purification
<b>Size:</b> 100ug , Concentration: 1 mg/ml by Nanodrop;	<b>GeneID (NCBI):</b> 51100	<b>CloneNo.:</b> 240623E1
<b>Source:</b> Rabbit	<b>UNIPROT ID:</b> Q9Y371	
<b>Isotype:</b> IgG	<b>Full Name:</b> SH3-domain GRB2-like endophilin B1	
<b>Immunogen Catalog Number:</b> AG7710	<b>Calculated MW:</b> 41 kDa	
	<b>Observed MW:</b> 41 kDa	

## Applications

**Tested Applications:**  
WB, IF/ICC, Cytometric bead array, Indirect ELISA

**Species Specificity:**  
human

## Product Information

83715-1-PBS targets Bif-1 as part of a matched antibody pair:

MP00691-2: 83715-1-PBS capture and 83715-3-PBS detection (validated in Cytometric bead array)

Unconjugated rabbit recombinant monoclonal antibody in PBS only (BSA and azide free) storage buffer at a concentration of 1 mg/mL, ready for conjugation. Created using Proteintech's proprietary in-house recombinant technology. Recombinant production enables unrivalled batch-to-batch consistency, easy scale-up, and future security of supply.

This conjugation ready format makes antibodies ideal for use in many applications including: ELISAs, multiplex assays requiring matched pairs, mass cytometry, and multiplex imaging applications. Antibody use should be optimized by the end user for each application and assay.

## Background Information

SH3GLB1 also known as Bif-1, contains an N-terminal domain, a central coiled-coil region, and a C-terminal SH3 domain, but shares no significant homology with members of the Bcl-2 family. SH3GLB1 is involved in activation of caspase-dependent apoptosis by promoting BAX/BAK1 activation (PubMed:16227588).

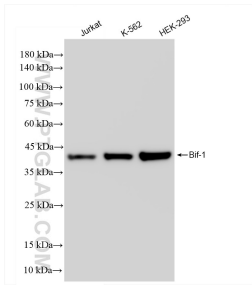
## Storage

**Storage:**  
Store at -80°C.  
**Storage Buffer:**  
PBS Only

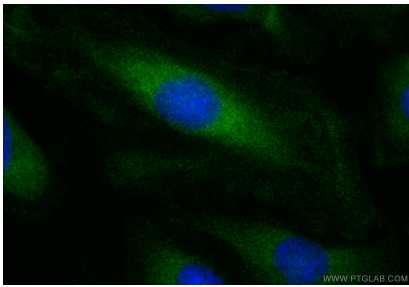
For technical support and original validation data for this product please contact:  
T: 1 (888) 4PTGLAB (1-888-478-4522) (toll free in USA), or 1(312) 455-8498 (outside USA)  
E: proteintech@ptglab.com  
W: ptglab.com

This product is exclusively available under Proteintech Group brand and is not available to purchase from any other manufacturer.

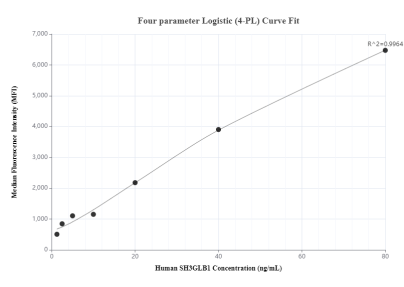
# Selected Validation Data



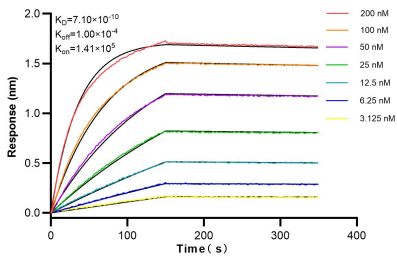
Various lysates were subjected to SDS PAGE followed by western blot with 83715-1-RR (Bif-1 antibody) at dilution of 1:10000 incubated at room temperature for 1.5 hours. This data was developed using the same antibody clone with 83715-1-PBS in a different storage buffer formulation.



Immunofluorescent analysis of (-20°C Ethanol) fixed HeLa cells using Bif-1 antibody (83715-1-RR, Clone: 240623E1 ) at dilution of 1:1000 and CoraLite®488-Conjugated Goat Anti-Rabbit IgG(H+L) (SA00013-2). This data was developed using the same antibody clone with 83715-1-PBS in a different storage buffer formulation.



Cytometric bead array standard curve of MP00691-2, SH3GLB1 Recombinant Matched Antibody Pair, PBS Only. Capture antibody: 83715-1-PBS. Detection antibody: 83715-3-PBS. Standard: Ag7710. Range: 1.25-80 ng/mL.



Bioluminescence resonance transfer (BLI) kinetic assays of 83715-1-RR against Human Bif-1 were performed. The affinity constant is 0.71 nM.