

For Research Use Only

Bif-1 Recombinant antibody

Catalog Number: 83715-1-RR



Basic Information

Catalog Number:	83715-1-RR	GenBank Accession Number:	BC007455	Purification Method:	Protein A purification
Size:	100ul , Concentration: 1000 ug/ml by Nanodrop;	GeneID (NCBI):	51100	CloneNo.:	240623E1
Source:	Rabbit	UNIPROT ID:	Q9Y371	Recommended Dilutions:	WB 1:5000-1:50000 IF/ICC 1:200-1:1000
Isotype:	IgG	Full Name:	SH3-domain GRB2-like endophilin B1		
Immunogen Catalog Number:	AG7710	Calculated MW:	41 kDa		
		Observed MW:	41 kDa		

Applications

Tested Applications:	WB, IF/ICC, ELISA	Positive Controls:	
Species Specificity:	human	WB :	Jurkat cells, K-562 cells, HEK-293 cells
		IF/ICC :	HeLa cells,

Background Information

SH3GLB1 also known as Bif-1, contains an N-terminal domain, a central coiled-coil region, and a C-terminal SH3 domain, but shares no significant homology with members of the Bcl-2 family. SH3GLB1 is involved in activation of caspase-dependent apoptosis by promoting BAX/BAK1 activation (PubMed:16227588).

Storage

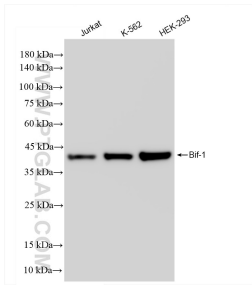
Storage:
Store at -20°C. Stable for one year after shipment.
Storage Buffer:
PBS with 0.02% sodium azide and 50% glycerol pH 7.3.
Aliquoting is unnecessary for -20°C storage

*** 20ul sizes contain 0.1% BSA

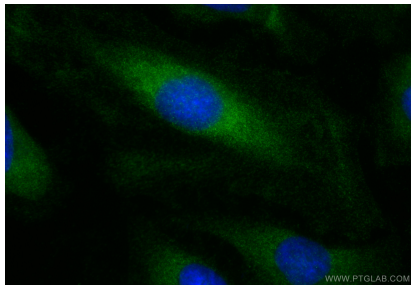
For technical support and original validation data for this product please contact:
T: 1 (888) 4PTGLAB (1-888-478-4522) (toll free in USA), or 1(312) 455-8498 (outside USA)
E: proteintech@ptglab.com
W: ptglab.com

This product is exclusively available under Proteintech Group brand and is not available to purchase from any other manufacturer.

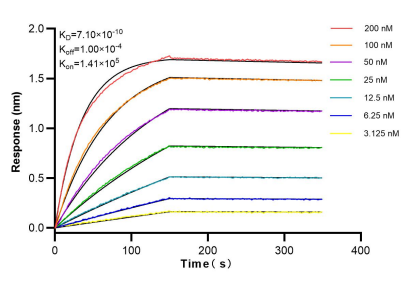
Selected Validation Data



Various lysates were subjected to SDS PAGE followed by western blot with 83715-1-RR (Bif-1 antibody) at dilution of 1:10000 incubated at room temperature for 1.5 hours.



Immunofluorescent analysis of (-20°C Ethanol) fixed HeLa cells using Bif-1 antibody (83715-1-RR, Clone: 240623E1) at dilution of 1:1000 and CoraLite®488-Conjugated Goat Anti-Rabbit IgG(H+L) (SA00013-2).



Biolayer interferometry (BLI) kinetic assays of 83715-1-RR against Human Bif-1 were performed. The affinity constant is 0.71 nM.