

For Research Use Only

CSPG4 Recombinant antibody, PBS Only (Detector)

Catalog Number: 83716-2-PBS



Basic Information

Catalog Number: 83716-2-PBS	GenBank Accession Number: NM_001897.5	Purification Method: Protein A purification
Size: 100ug , Concentration: 1 mg/ml by Nanodrop;	GeneID (NCBI): 1464	CloneNo.: 240733F12
Source: Rabbit	UNIPROT ID: Q6UVK1	
Isotype: IgG	Full Name: chondroitin sulfate proteoglycan 4	
	Calculated MW: 251kd	

Applications

Tested Applications:
Cytometric bead array, Sandwich ELISA, Indirect ELISA, Sample test

Species Specificity:
human

Product Information

83716-2-PBS targets CSPG4 as part of a matched antibody pair:

MP00694-1: 83716-1-PBS capture and 83716-2-PBS detection (validated in Cytometric bead array)

MP00694-3: 83716-5-PBS capture and 83716-2-PBS detection (validated in Sandwich ELISA)

Unconjugated rabbit recombinant monoclonal antibody in PBS only (BSA and azide free) storage buffer at a concentration of 1 mg/mL, ready for conjugation. Created using Proteintech's proprietary in-house recombinant technology. Recombinant production enables unrivalled batch-to-batch consistency, easy scale-up, and future security of supply.

This conjugation ready format makes antibodies ideal for use in many applications including: ELISAs, multiplex assays requiring matched pairs, mass cytometry, and multiplex imaging applications. Antibody use should be optimized by the end user for each application and assay.

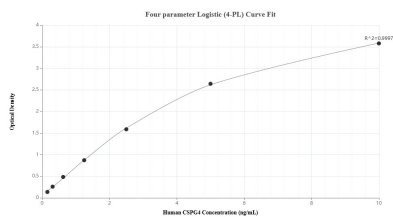
Storage

Storage:
Store at -80°C.
Storage Buffer:
PBS Only

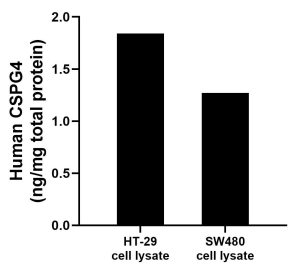
For technical support and original validation data for this product please contact:
T: 1 (888) 4PTGLAB (1-888-478-4522) (toll free in USA), or 1(312) 455-8498 (outside USA)
E: proteintech@ptglab.com
W: ptglab.com

This product is exclusively available under Proteintech Group brand and is not available to purchase from any other manufacturer.

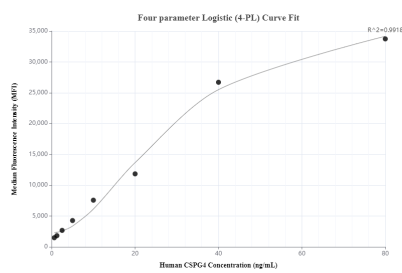
Selected Validation Data



Sandwich ELISA standard curve of MP00694-3, Human CSPG4 Recombinant Matched Antibody Pair - PBS only. 83716-5-PBS was coated to a plate as the capture antibody and incubated with serial dilutions of standard Eg0201. 83716-2-PBS was HRP conjugated as the detection antibody. Range: 0.156-10 ng/mL



HT-29 cell lysate and SW480 cell lysate were measured. The human CSPG4 concentration was determined to be 1.84 ng/mg total protein in HT-29 cell lysate and 1.27 ng/mg total protein in SW480 cell lysate.



Cytometric bead array standard curve of MP00694-1, CSPG4 Recombinant Matched Antibody Pair, PBS Only. Capture antibody: 83716-1-PBS. Detection antibody: 83716-2-PBS. Standard: Eg0201. Range: 0.625-80 ng/mL