

For Research Use Only

# Mouse VCAM-1/CD106 Recombinant antibody, PBS Only (Capture/Detector)

Catalog Number: 83719-3-PBS



## Basic Information

<b>Catalog Number:</b> 83719-3-PBS	<b>GenBank Accession Number:</b> CAA47989.1	<b>Purification Method:</b> Protein A purification
<b>Size:</b> 100ug , Concentration: 1 mg/ml by Nanodrop;	<b>GeneID (NCBI):</b> 22329	<b>CloneNo.:</b> 240597D2
<b>Source:</b> Rabbit	<b>UNIPROT ID:</b> P29533	
<b>Isotype:</b> IgG	<b>Full Name:</b> vascular cell adhesion molecule 1	
	<b>Calculated MW:</b> 81 kDa	

## Applications

**Tested Applications:**  
Cytometric bead array, Sandwich ELISA, Indirect ELISA, Sample test

**Species Specificity:**  
mouse

## Product Information

83719-3-PBS targets VCAM-1/CD106 as part of a matched antibody pair:

MP00701-2: 83719-3-PBS capture and 83719-5-PBS detection (validated in Cytometric bead array)

MP00701-3: 83719-3-PBS capture and 83719-2-PBS detection (validated in Cytometric bead array)

MP00701-4: 83719-1-PBS capture and 83719-3-PBS detection (validated in Sandwich ELISA)

Unconjugated rabbit recombinant monoclonal antibody in PBS only (BSA and azide free) storage buffer at a concentration of 1 mg/mL, ready for conjugation. Created using Proteintech's proprietary in-house recombinant technology. Recombinant production enables unrivalled batch-to-batch consistency, easy scale-up, and future security of supply.

This conjugation ready format makes antibodies ideal for use in many applications including: ELISAs, multiplex assays requiring matched pairs, mass cytometry, and multiplex imaging applications. Antibody use should be optimized by the end user for each application and assay.

## Storage

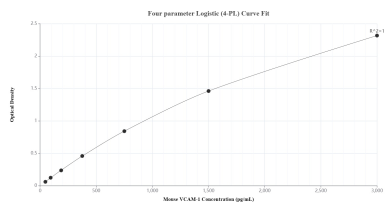
**Storage:**  
Store at -80°C.

**Storage Buffer:**  
PBS Only

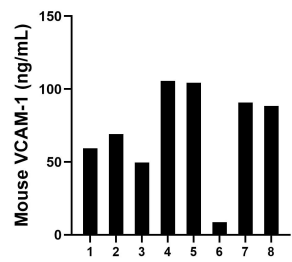
For technical support and original validation data for this product please contact:  
T: 1 (888) 4PTGLAB (1-888-478-4522) (toll free in USA), or 1(312) 455-8498 (outside USA)  
E: [proteintech@ptglab.com](mailto:proteintech@ptglab.com)  
W: [ptglab.com](http://ptglab.com)

This product is exclusively available under Proteintech Group brand and is not available to purchase from any other manufacturer.

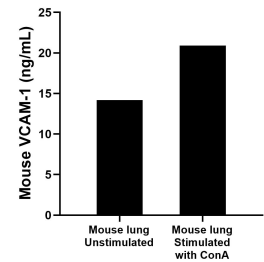
Selected Validation Data



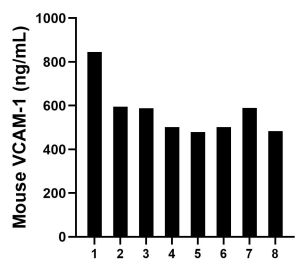
Sandwich ELISA standard curve of MP00701-4, Mouse VCAM-1/CD106 Recombinant Matched Antibody Pair - PBS only. 83719-1-PBS was coated to a plate as the capture antibody and incubated with serial dilutions of standard Eg0639. 83719-3-PBS was HRP conjugated as the detection antibody. Range: 46.88-3000 pg/mL



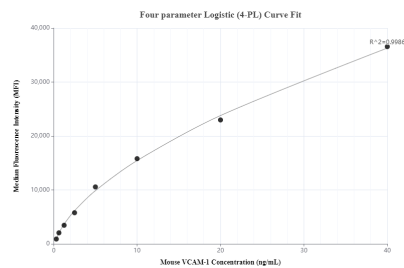
Urine of eight mice was measured. The VCAM-1 concentration of detected samples was determined to be 71.97 ng/mL with a range of 8.65-105.58 ng/mL



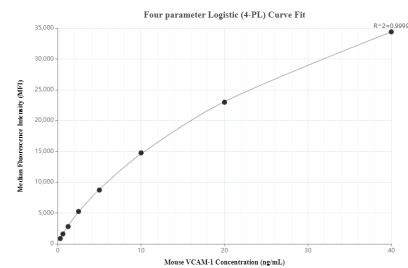
Mouse lung, cut into 1-2 mm pieces, was cultured for 3 days in 25-30 mL of RPMI supplemented with 10% fetal bovine serum and unstimulated or stimulated with 10 µg/mL ConA. The mean VCAM-1 concentration was determined to be 14.2 ng/mL in unstimulated mouse lung superantant, 20.9 ng/mL in ConA stimulated mouse lung superantant.



Serum of eight mice was measured. The VCAM-1 concentration of detected samples was determined to be 572.76 ng/mL with a range of 483.18-844.96 ng/mL



Cytometric bead array standard curve of MP00701-2, MOUSE VCAM-1/CD106 Recombinant Matched Antibody Pair, PBS Only. Capture antibody: 83719-3-PBS. Detection antibody: 83719-5-PBS. Standard: Eg0639. Range: 0.313-40 ng/mL



Cytometric bead array standard curve of MP00701-3, MOUSE VCAM-1/CD106 Recombinant Matched Antibody Pair, PBS Only. Capture antibody: 83719-3-PBS. Detection antibody: 83719-2-PBS. Standard: Eg0639. Range: 0.313-40 ng/mL