

For Research Use Only

# IL-7Ra/CD127 Recombinant antibody, PBS Only (Capture/Detector)

Catalog Number: 83723-2-PBS



## Basic Information

**Catalog Number:**

83723-2-PBS

**Size:**

100ug, Concentration: 1 mg/ml by  
Nanodrop;

**Source:**

Rabbit

**Isotype:**

IgG

**GenBank Accession Number:**

AAC83204.1

**GeneID (NCBI):**

3575

**ENSEMBL Gene ID:**

ENSG00000168685

**UNIPROT ID:**

P16871-1(I66T, V138I)

**Full Name:**

interleukin 7 receptor

**Calculated MW:**

52 kDa

**Purification Method:**

Protein A purification

**CloneNo.:**

240749C11

## Applications

**Tested Applications:**

Cytometric bead array, Sandwich ELISA, Indirect ELISA,  
Sample test

**Species Specificity:**

human

## Product Information

83723-2-PBS targets IL-7Ra/CD127 as part of a matched antibody pair:

MP00704-1: 83723-2-PBS capture and 83723-1-PBS detection (validated in Cytometric bead array)

MP00704-3: 83723-3-PBS capture and 83723-2-PBS detection (validated in Cytometric bead array, Sandwich ELISA)

Unconjugated rabbit recombinant monoclonal antibody in PBS only (BSA and azide free) storage buffer at a concentration of 1 mg/mL, ready for conjugation. Created using Proteintech's proprietary in-house recombinant technology. Recombinant production enables unrivalled batch-to-batch consistency, easy scale-up, and future security of supply.

This conjugation ready format makes antibodies ideal for use in many applications including: ELISAs, multiplex assays requiring matched pairs, mass cytometry, and multiplex imaging applications. Antibody use should be optimized by the end user for each application and assay.

## Storage

**Storage:**

Store at -80°C.

**Storage Buffer:**

PBS Only

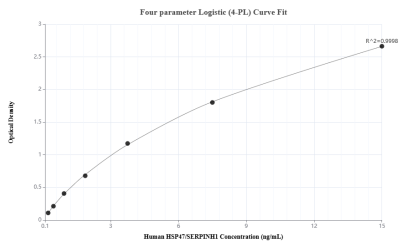
For technical support and original validation data for this product please contact:

T: 1 (888) 4PTGLAB (1-888-478-4522) (toll free  
in USA), or 1(312) 455-8498 (outside USA)

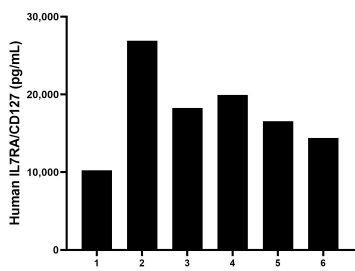
E: [proteintech@ptglab.com](mailto:proteintech@ptglab.com)  
W: [ptglab.com](http://ptglab.com)

This product is exclusively available under Proteintech Group brand and is not available to purchase from any other manufacturer.

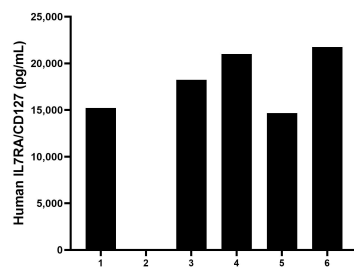
Selected Validation Data



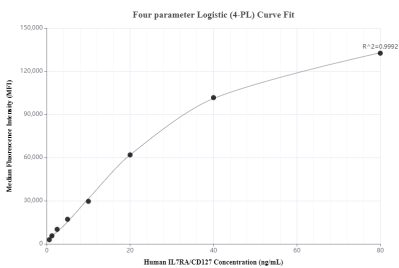
Sandwich ELISA standard curve of MP00704-3, Human IL-7Ra/CD127 Recombinant Matched Antibody Pair - PBS only. 83723-3-PBS was coated to a plate as the capture antibody and incubated with serial dilutions of standard Eg1279. 83723-2-PBS was HRP conjugated as the detection antibody. Range: 19.5-1250 pg/mL



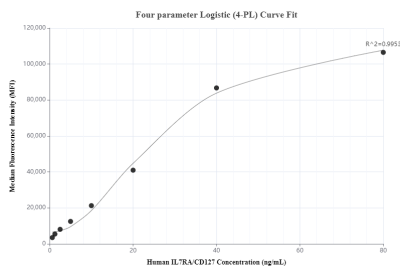
Plasma of six humans was measured. The human IL-7Ra/CD127 concentration of detected samples was determined to be 17,709.98 pg/mL with a range of 10,229.95 - 26,911.57 pg/mL.



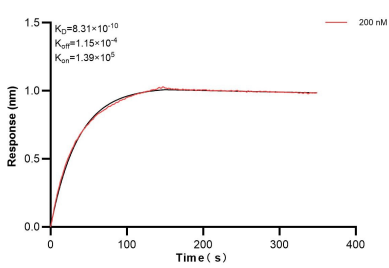
Serum of six humans was measured. The human IL-7Ra/CD127 concentration of detected samples was determined to be 18,168.16 pg/mL with a range of 14,661.52 - 21,740.24 pg/mL.



Cytometric bead array standard curve of MP00704-1, IL-7Ra/CD127 Recombinant Matched Antibody Pair, PBS Only. Capture antibody: 83723-2-PBS. Detection antibody: 83723-1-PBS. Standard: Eg1279. Range: 0.625-80 ng/mL



Cytometric bead array standard curve of MP00704-3, IL-7Ra/CD127 Recombinant Matched Antibody Pair, PBS Only. Capture antibody: 83723-3-PBS. Detection antibody: 83723-2-PBS. Standard: Eg1279. Range: 0.625-80 ng/mL



Bi-layer interferometry (BLI) kinetic assay of 83723-2-PBS against Human IL-7Ra/CD127 was performed. The affinity constant is 0.831 nM.