

For Research Use Only

# CD155/PVR Recombinant antibody

Catalog Number: 83724-6-RR



## Basic Information

Catalog Number:

83724-6-RR

Size:

100ul, Concentration: 1000 ug/ml by Nanodrop;

Source:

Rabbit

Isotype:

IgG

GenBank Accession Number:

NM\_027514.2

GeneID (NCBI):

52118

UNIPROT ID:

Q8K094

Full Name:

poliovirus receptor

Calculated MW:

45 kDa

Observed MW:

80 kDa

Purification Method:

Protein A purification

CloneNo.:

240731B1

Recommended Dilutions:

WB 1:500-1:2000

IF/ICC 1:500-1:2000

## Applications

Tested Applications:

WB, IF/ICC, ELISA

Species Specificity:

mouse

Positive Controls:

WB : RAW 264.7 cells, mouse liver tissue, mouse small intestine tissue

IF/ICC : RAW 264.7 cells,

## Background Information

CD155, also known as the poliovirus receptor (PVR) or Nectin-5, is one of the nectin-like family members, belonging to the Ca<sup>2+</sup> independent immunoglobulin superfamily (IgSF) in cell adhesion molecules (PMID: 37660884). CD155 is a type I transmembrane protein composed of three extracellular immunoglobulin-like domains, a transmembrane domain, and a cytoplasmic tail. It is involved in cell-to-cell and cell-to-ECM adhesion (PMID: 32019260; 11437656). CD155 acts as a ligand for immune receptors, including TIGIT, CD96 and CD226, which are expressed on T cells and NK cells. CD155 interacts with these receptors to modulate immune responses, such as T cell activation and NK cell-mediated cytotoxicity (PMID: 37660884). CD155 serves as the entry receptor for poliovirus and thereby mediates susceptibility to poliovirus infection (PMID: 15034010).

## Storage

Storage:

Store at -20°C. Stable for one year after shipment.

Storage Buffer:

PBS with 0.02% sodium azide and 50% glycerol pH 7.3.

Aliquoting is unnecessary for -20°C storage

\*\*\* 20ul sizes contain 0.1% BSA

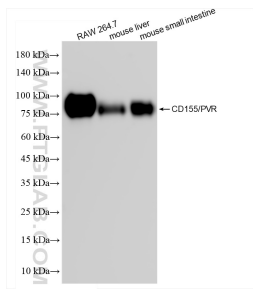
For technical support and original validation data for this product please contact:

T: 1 (888) 4PTGLAB (1-888-478-4522) (toll free in USA), or 1(312) 455-8498 (outside USA)

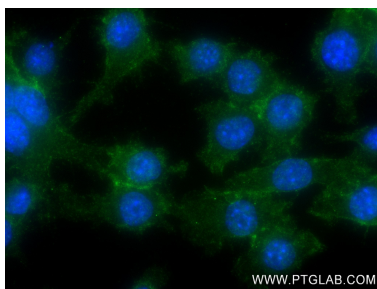
E: [proteintech@ptglab.com](mailto:proteintech@ptglab.com)  
W: [ptglab.com](http://ptglab.com)

This product is exclusively available under Proteintech Group brand and is not available to purchase from any other manufacturer.

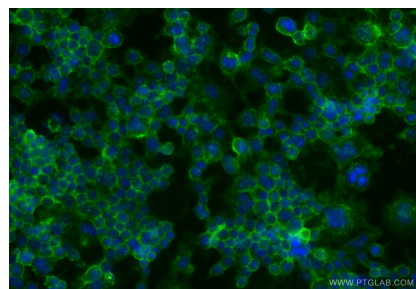
## Selected Validation Data



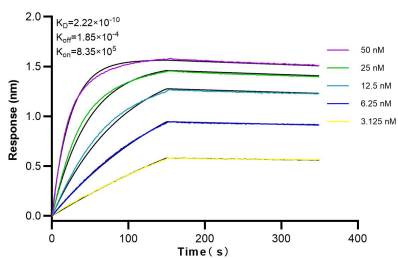
Various lysates were subjected to SDS PAGE followed by western blot with 83724-6-RR (CD155/PVR antibody) at dilution of 1:1000 incubated at room temperature for 1.5 hours.



Immunofluorescent analysis of (4% PFA) fixed RAW 264.7 cells using CD155/PVR antibody (83724-6-RR, Clone: 240731B1) at dilution of 1:250 and CoraLite®488-Conjugated AffiniPure Goat Anti-Rabbit IgG(H+L) (SA00013-2).



Immunofluorescent analysis of (-20°C Ethanol) fixed RAW 264.7 cells using CD155/PVR antibody (83724-6-RR, Clone: 240731B1) at dilution of 1:1000 and CoraLite®488-Conjugated Goat Anti-Rabbit IgG(H+L) (SA00013-2).



Biolayer interferometry (BLI) kinetic assays of 83724-6-RR against Mouse CD155/PVR were performed. The affinity constant is 0.222 nM.