

For Research Use Only

IL-1RAP Recombinant antibody, PBS Only (Detector)

Catalog Number: 83726-5-PBS



Basic Information

Catalog Number: 83726-5-PBS	GenBank Accession Number: NM_002182.4	Purification Method: Protein A purification
Size: 100ug, Concentration: 1 mg/ml by Nanodrop;	GeneID (NCBI): 3556	CloneNo.: 240756E7
Source: Rabbit	UNIPROT ID: Q9NPH3-1	
Isotype: IgG	Full Name: interleukin 1 receptor accessory protein	
	Calculated MW: 65 kDa	

Applications

Tested Applications:
Sandwich ELISA, Indirect ELISA, Sample test

Species Specificity:
human

Product Information

83726-5-PBS targets IL-1RAP as part of a matched antibody pair:

MP00708-4: 98073-1-PBS capture and 83726-5-PBS detection (validated in Sandwich ELISA)

Unconjugated rabbit recombinant monoclonal antibody in PBS only (BSA and azide free) storage buffer at a concentration of 1 mg/mL, ready for conjugation. Created using Proteintech's proprietary in-house recombinant technology. Recombinant production enables unrivalled batch-to-batch consistency, easy scale-up, and future security of supply.

This conjugation ready format makes antibodies ideal for use in many applications including: ELISAs, multiplex assays requiring matched pairs, mass cytometry, and multiplex imaging applications. Antibody use should be optimized by the end user for each application and assay.

Storage

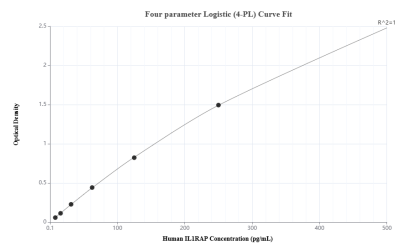
Storage:
Store at -80°C.

Storage Buffer:
PBS Only

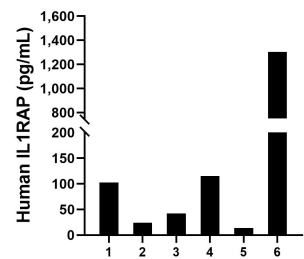
For technical support and original validation data for this product please contact:
T: 1 (888) 4PTGLAB (1-888-478-4522) (toll free in USA), or 1(312) 455-8498 (outside USA)
E: proteintech@ptglab.com
W: ptglab.com

This product is exclusively available under Proteintech Group brand and is not available to purchase from any other manufacturer.

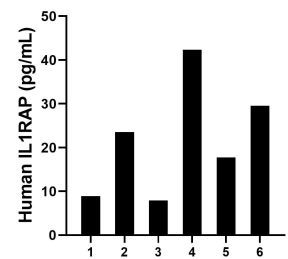
Selected Validation Data



Sandwich ELISA standard curve of MP00708-4, Human IL-1RAP Recombinant Matched Antibody Pair - PBS only. 98073-1-PBS was coated to a plate as the capture antibody and incubated with serial dilutions of standard Eg0827. 83726-5-PBS was HRP conjugated as the detection antibody. Range: 7.8-500 pg/mL



Plasma of six individual healthy human donors was measured. The human IL-1RAP concentration of detected samples was determined to be 266.79 pg/mL with a range of 13.79 - 1,302.80 pg/mL.



Serum of six individual healthy human donors was measured. The human IL-1RAP concentration of detected samples was determined to be 21.67 pg/mL with a range of 7.89 - 42.37 pg/mL.