

For Research Use Only

SIRP Alpha/CD172a Recombinant antibody, PBS Only (Capture)

Catalog Number: 83729-1-PBS



Basic Information

Catalog Number: 83729-1-PBS	GenBank Accession Number: NM_080792	Purification Method: Protein A purification
Size: 100ug, Concentration: 1 mg/ml by Nanodrop;	GeneID (NCBI): 140885	CloneNo.: 240789D4
Source: Rabbit	UNIPROT ID: P78324	
Isotype: IgG	Full Name: signal-regulatory protein alpha	
	Calculated MW: 55 kDa	

Applications

Tested Applications:
Cytometric bead array, Sandwich ELISA, Indirect ELISA, Sample test

Species Specificity:
human

Product Information

83729-1-PBS targets SIRP Alpha/CD172a as part of a matched antibody pair:

MP00713-1: 83729-1-PBS capture and 83729-4-PBS detection (validated in Cytometric bead array, Sandwich ELISA)

Unconjugated rabbit recombinant monoclonal antibody in PBS only (BSA and azide free) storage buffer at a concentration of 1 mg/mL, ready for conjugation. Created using Proteintech's proprietary in-house recombinant technology. Recombinant production enables unrivalled batch-to-batch consistency, easy scale-up, and future security of supply.

This conjugation ready format makes antibodies ideal for use in many applications including: ELISAs, multiplex assays requiring matched pairs, mass cytometry, and multiplex imaging applications. Antibody use should be optimized by the end user for each application and assay.

Storage

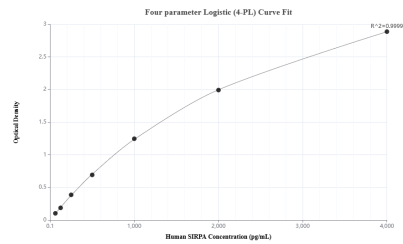
Storage:
Store at -80°C.

Storage Buffer:
PBS Only

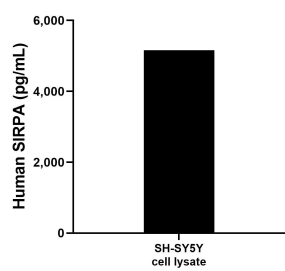
For technical support and original validation data for this product please contact:
T: 1 (888) 4PTGLAB (1-888-478-4522) (toll free in USA), or 1(312) 455-8498 (outside USA)
E: proteintech@ptglab.com
W: ptglab.com

This product is exclusively available under Proteintech Group brand and is not available to purchase from any other manufacturer.

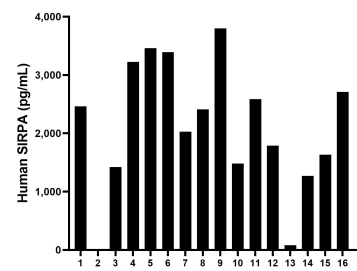
Selected Validation Data



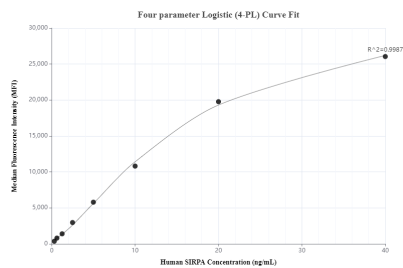
Sandwich ELISA standard curve of MP00713-1, Human SIRPA Recombinant Matched Antibody Pair - PBS only. 83729-1-PBS was coated to a plate as the capture antibody and incubated with serial dilutions of standard Eg0625. 83729-4-PBS was HRP conjugated as the detection antibody. Range: 62.5-4000 pg/mL



SH-SY5Y cell lysate was measured. The human SIRPA concentration of detected samples was determined to be 5,156.59 pg/mL.



Serum of sixteen humans was measured. The human SIRPA concentration of detected samples was determined to be 2,250 pg/mL with a range of 79.96 - 3,800.09 pg/mL.



Cytometric bead array standard curve of MP00713-1, SIRP Alpha Recombinant Matched Antibody Pair, PBS Only. Capture antibody: 83729-1-PBS. Detection antibody: 83729-4-PBS. Standard: Eg0625. Range: 0.313-40 ng/mL