

For Research Use Only

SIRP Alpha/CD172a Recombinant antibody, PBS Only (Detector)

Catalog Number: 83729-3-PBS



Basic Information

Catalog Number: 83729-3-PBS	GenBank Accession Number: NM_080792	Purification Method: Protein A purification
Size: 100ug , Concentration: 1 mg/ml by Nanodrop;	GeneID (NCBI): 140885	CloneNo.: 240789E7
Source: Rabbit	UNIPROT ID: P78324	
Isotype: IgG	Full Name: signal-regulatory protein alpha	
	Calculated MW: 55 kDa	

Applications

Tested Applications:
IF/ICC, Cytometric bead array, Indirect ELISA

Species Specificity:
human

Product Information

83729-3-PBS targets SIRP Alpha/CD172a as part of a matched antibody pair:

MP00713-2: 83729-2-PBS capture and 83729-3-PBS detection (validated in Cytometric bead array)

Unconjugated rabbit recombinant monoclonal antibody in PBS only (BSA and azide free) storage buffer at a concentration of 1 mg/mL, ready for conjugation. Created using Proteintech's proprietary in-house recombinant technology. Recombinant production enables unrivalled batch-to-batch consistency, easy scale-up, and future security of supply.

This conjugation ready format makes antibodies ideal for use in many applications including: ELISAs, multiplex assays requiring matched pairs, mass cytometry, and multiplex imaging applications. Antibody use should be optimized by the end user for each application and assay.

Background Information

SIRP Alpha, also known as CD172a, SHPS-1, and BIT, belongs to the SIRP family. SIRP Alpha is a transmembrane glycoprotein expressed explicitly on myeloid cells and provides a "do not eat me" signal after engaging with integrin-associated protein CD47 on tumor cells (PMID: 36419386). SIRP Alpha shows heterogeneity in molecular weight (~65-120 kDa) in various tissues due to differential glycosylation (PMID: 18051954).

Storage

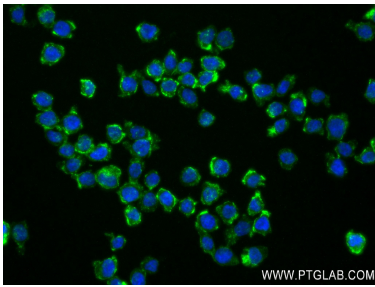
Storage:
Store at -80°C.

Storage Buffer:
PBS Only

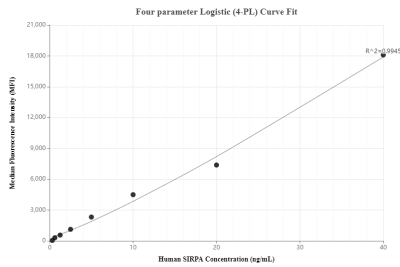
For technical support and original validation data for this product please contact:
T: 1 (888) 4PTGLAB (1-888-478-4522) (toll free in USA), or 1(312) 455-8498 (outside USA)
E: proteintech@ptglab.com
W: ptglab.com

This product is exclusively available under Proteintech Group brand and is not available to purchase from any other manufacturer.

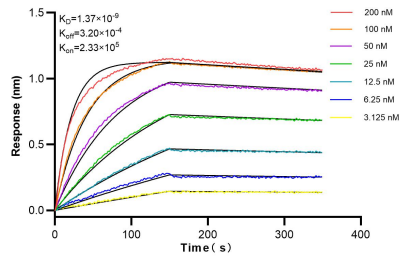
Selected Validation Data



Immunofluorescent analysis of (4% PFA) fixed THP-1 cells using SIRP Alpha/CD172a antibody (83729-3-RR, Clone: 240789E7) at dilution of 1:250 and CoraLite®488-Conjugated AffiniPure Goat Anti-Rabbit IgG(H+L) (SA00013-2). This data was developed using the same antibody clone with 83729-3-PBS in a different storage buffer formulation.



Cytometric bead array standard curve of MP00713-2, SIRP Alpha Recombinant Matched Antibody Pair, PBS Only. Capture antibody: 83729-2-PBS. Detection antibody: 83729-3-PBS. Standard: Eg0625. Range: 0.313-40 ng/mL.



Biolayer interferometry (BLI) kinetic assays of 83729-3-RR against Human SIRP Alpha were performed. The affinity constant is 1.37 nM.