

For Research Use Only

CLIC2 Recombinant antibody, PBS Only (Detector)

Catalog Number: 83730-3-PBS



Basic Information

Catalog Number: 83730-3-PBS	GenBank Accession Number: BC005367	Purification Method: Protein A purification
Size: 100ug , Concentration: 1 mg/ml by Nanodrop;	GeneID (NCBI): 1193	CloneNo.: 240726D1
Source: Rabbit	UNIPROT ID: O15247	
Isotype: IgG	Full Name: chloride intracellular channel 2	
Immunogen Catalog Number: AG6766	Calculated MW: 28 kDa	

Applications

Tested Applications:
WB, Cytometric bead array, Indirect ELISA

Species Specificity:
human

Product Information

83730-3-PBS targets CLIC2 as part of a matched antibody pair:

MP00715-1: 83730-1-PBS capture and 83730-3-PBS detection (validated in Cytometric bead array)

Unconjugated rabbit recombinant monoclonal antibody in PBS only (BSA and azide free) storage buffer at a concentration of 1 mg/mL, ready for conjugation. Created using Proteintech's proprietary in-house recombinant technology. Recombinant production enables unrivalled batch-to-batch consistency, easy scale-up, and future security of supply.

This conjugation ready format makes antibodies ideal for use in many applications including: ELISAs, multiplex assays requiring matched pairs, mass cytometry, and multiplex imaging applications. Antibody use should be optimized by the end user for each application and assay.

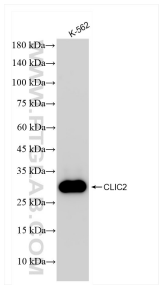
Storage

Storage:
Store at -80°C.
Storage Buffer:
PBS Only

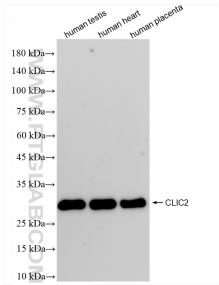
For technical support and original validation data for this product please contact:
T: 1 (888) 4PTGLAB (1-888-478-4522) (toll free in USA), or 1(312) 455-8498 (outside USA)
E: proteintech@ptglab.com
W: ptglab.com

This product is exclusively available under Proteintech Group brand and is not available to purchase from any other manufacturer.

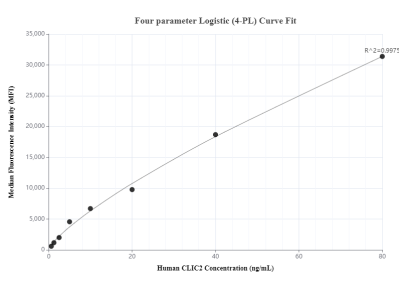
Selected Validation Data



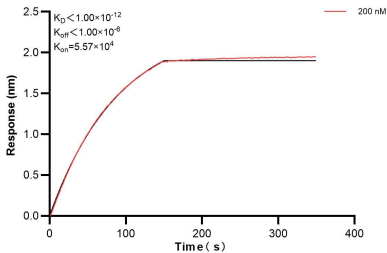
K-562 cells were subjected to SDS PAGE followed by western blot with 83730-3-RR (CLIC2 antibody) at dilution of 1:10000 incubated at room temperature for 1.5 hours. This data was developed using the same antibody clone with 83730-3-PBS in a different storage buffer formulation.



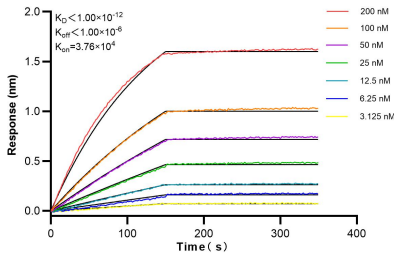
Various lysates were subjected to SDS PAGE followed by western blot with 83730-3-RR (CLIC2 antibody) at dilution of 1:10000 incubated at room temperature for 1.5 hours. This data was developed using the same antibody clone with 83730-3-PBS in a different storage buffer formulation.



Cytometric bead array standard curve of MP00715-1, CLIC2 Recombinant Matched Antibody Pair, PBS Only. Capture antibody: 83730-1-PBS. Detection antibody: 83730-3-PBS. Standard: Ag6766. Range: 0.625-80 ng/mL.



Biolayer interferometry (BLI) kinetic assay of 83730-3-PBS against Human CLIC2 was performed. The affinity constant is below 1 pM.



Biolayer interferometry (BLI) kinetic assays of 83730-3-RR against Human CLIC2 were performed. The affinity constant is below 1 pM.