

For Research Use Only

POT1 Recombinant antibody

Catalog Number: 83732-2-RR



Basic Information

Catalog Number: 83732-2-RR	GenBank Accession Number: BC002923	Purification Method: Protein A purification
Size: 100ul , Concentration: 1000 ug/ml by Nanodrop;	GeneID (NCBI): 25913	CloneNo.: 240688E5
Source: Rabbit	UNIPROT ID: Q9NUX5	Recommended Dilutions: IF/ICC 1:125-1:500
Isotype: IgG	Full Name: POT1 protection of telomeres 1 homolog (S. pombe)	
Immunogen Catalog Number: AG0875	Calculated MW: 71 kDa	

Applications

Tested Applications: IF/ICC, FC (Intra), ELISA	Positive Controls: IF/ICC : HeLa cells,
Species Specificity: human	

Background Information

Protection of telomeres 1(POT1) is a conserved protein that binds the G-rich strand of its own telomeric repeat sequence, with a role in protecting chromosome ends. It's housekeeping gene that is required to ensure the integrity of chromosome ends in all cells. It's a component of the telomerase ribonucleoprotein(RNP) complex that is essential for the replication of chromosome termini. It consists the TRF1 complex that is involved in the regulation of telomere length by cis-inhibition of telomerase. We have discovered that POT1 exists in at least three consistently occurring forms; 90, 70 and 45kDa. The unexpected molecular weights of POT1 seem to be associated with SUMO1 and ubiquitin conjugation; the latter occurring at a double lysine residue at 289-KK-290 (.PMID: 24054699)

Storage

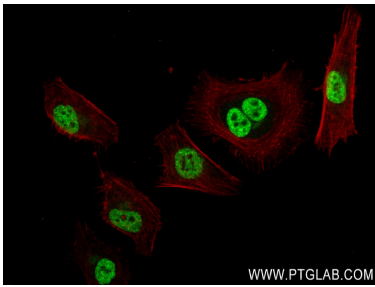
Storage:
Store at -20°C. Stable for one year after shipment.
Storage Buffer:
PBS with 0.02% sodium azide and 50% glycerol pH 7.3.
Aliquoting is unnecessary for -20°C storage

*** 20ul sizes contain 0.1% BSA

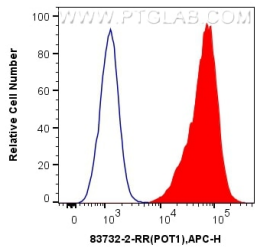
For technical support and original validation data for this product please contact:
T: 1 (888) 4PTGLAB (1-888-478-4522) (toll free in USA), or 1(312) 455-8498 (outside USA)
E: proteintech@ptglab.com
W: ptglab.com

This product is exclusively available under Proteintech Group brand and is not available to purchase from any other manufacturer.

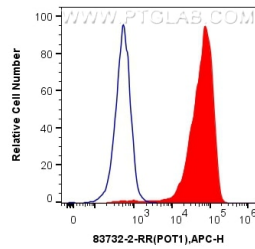
Selected Validation Data



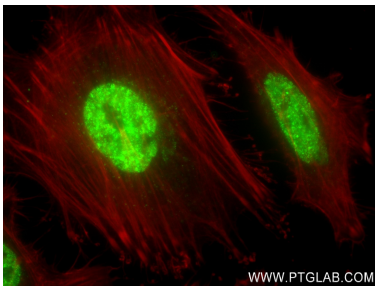
Immunofluorescent analysis of (4% PFA) fixed HeLa cells using POT1 antibody (83732-2-RR, Clone: 240688E5) at dilution of 1:250 and CoraLite®488-Conjugated AffiniPure Goat Anti-Rabbit IgG(H+L) (SA00013-2), CL594-Phalloidin (red).



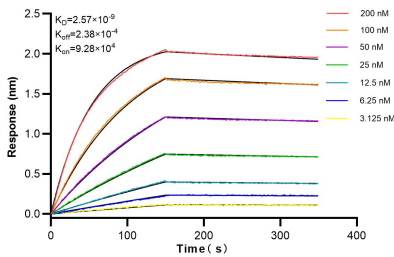
1x10⁶ U2OS cells were intracellularly stained with 0.25 ug POT1 Recombinant antibody (83732-2-RR, Clone:240688E5) and APC-Conjugated AffiniPure Goat Anti-Rabbit IgG(H+L)(red), or 0.25 ug Isotype Control (blue). Cells were fixed and permeabilized with Transcription Factor Staining Buffer Kit (PF00011).



1x10⁶ SH-SY5Y cells were intracellularly stained with 0.25 ug POT1 Recombinant antibody (83732-2-RR, Clone:240688E5) and APC-Conjugated AffiniPure Goat Anti-Rabbit IgG(H+L)(red), or 0.25 ug Isotype Control (blue). Cells were fixed and permeabilized with Transcription Factor Staining Buffer Kit (PF00011).



Immunofluorescent analysis of (4% PFA) fixed HeLa cells using POT1 antibody (83732-2-RR, Clone: 240688E5) at dilution of 1:250 and CoraLite®488-Conjugated AffiniPure Goat Anti-Rabbit IgG(H+L) (SA00013-2), CL594-Phalloidin (red).



Biolayer interferometry (BLI) kinetic assays of 83732-2-RR against Human POT1 were performed. The affinity constant is 2.57 nM.