

For Research Use Only

# Mouse CX3CL1 Recombinant antibody, PBS Only (Capture)

Catalog Number: 83738-4-PBS



## Basic Information

|  |  |   |
|--|--|---|
| <b>Catalog Number:</b><br>83738-4-PBS                          | <b>GenBank Accession Number:</b><br>NM_009142.3        | <b>Purification Method:</b><br>Protein A purification |
| <b>Size:</b><br>100ug , Concentration: 1 mg/ml by<br>Nanodrop; | <b>GeneID (NCBI):</b><br>20312                         | <b>CloneNo.:</b><br>240738F9                          |
| <b>Source:</b><br>Rabbit                                       | <b>UNIPROT ID:</b><br>O35188                           |   |
| <b>Isotype:</b><br>IgG   | <b>Full Name:</b><br>chemokine (C-X3-C motif) ligand 1 |   |
| <b>Immunogen Catalog Number:</b><br>EG0704                     | <b>Calculated MW:</b><br>42 kDa                        |   |

## Applications

**Tested Applications:**  
Cytometric bead array, Sandwich ELISA, Indirect ELISA,  
Sample test

**Species Specificity:**  
mouse

## Product Information

83738-4-PBS targets CX3CL1 as part of a matched antibody pair:

MP00688-1: 83738-4-PBS capture and 83738-2-PBS detection (validated in Cytometric bead array, Sandwich ELISA)

Unconjugated rabbit recombinant monoclonal antibody in PBS only (BSA and azide free) storage buffer at a concentration of 1 mg/mL, ready for conjugation. Created using Proteintech's proprietary in-house recombinant technology. Recombinant production enables unrivalled batch-to-batch consistency, easy scale-up, and future security of supply.

This conjugation ready format makes antibodies ideal for use in many applications including: ELISAs, multiplex assays requiring matched pairs, mass cytometry, and multiplex imaging applications. Antibody use should be optimized by the end user for each application and assay.

## Storage

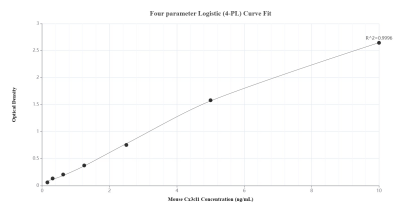
**Storage:**  
Store at -80°C.

**Storage Buffer:**  
PBS only, pH7.3

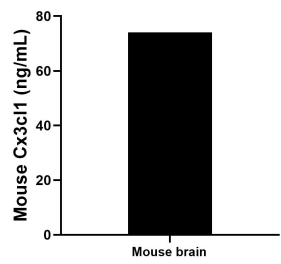
For technical support and original validation data for this product please contact:  
T: 1 (888) 4PTGLAB (1-888-478-4522) (toll free in USA), or 1(312) 455-8498 (outside USA)  
E: [proteintech@ptglab.com](mailto:proteintech@ptglab.com)  
W: [ptglab.com](http://ptglab.com)

This product is exclusively available under Proteintech Group brand and is not available to purchase from any other manufacturer.

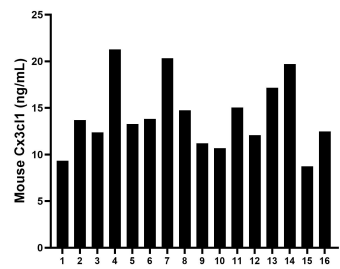
Selected Validation Data



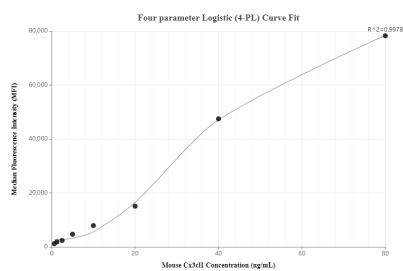
Sandwich ELISA standard curve of MP00688-1, Mouse Cx3cl1 Recombinant Matched Antibody Pair - PBS only. 83738-4-PBS was coated to a plate as the capture antibody and incubated with serial dilutions of standard Eg0704. 83738-2-PBS was HRP conjugated as the detection antibody. Range: 0.156-10 ng/mL



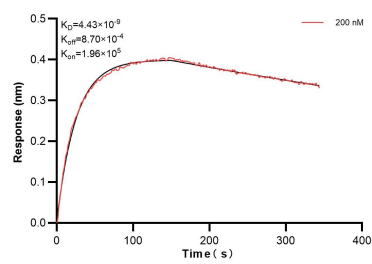
The mean mouse Cx3cl1 concentration was determined to be 74.07 ng/mL in mouse brain tissue extract based on a 6.0 mg/mL extract load.



Serum of sixteen mice was measured. The Cx3cl1 concentration of detected samples was determined to be 14.12 ng/mL with a range of 8.73 - 21.28 ng/mL.



Cytometric bead array standard curve of MP00688-1, MOUSE CX3CL1 Recombinant Matched Antibody Pair, PBS Only. Capture antibody: 83738-4-PBS. Detection antibody: 83738-2-PBS. Standard: Eg0704. Range: 0.625-80 ng/mL



Biolayer interferometry (BLI) kinetic assays of 83738-4-PBS against Mouse CX3CL1 was performed. The affinity constant is 4.43 nM.