

For Research Use Only

# Dectin-1/CLEC7A Recombinant monoclonal antibody, PBS Only

Catalog Number:83739-3-PBS



## Basic Information

<b>Catalog Number:</b> 83739-3-PBS	<b>GenBank Accession Number:</b> NM_197947.3	<b>Purification Method:</b> Protein A purification
<b>Size:</b> 100ug , Concentration: 1 mg/ml by Nanodrop;	<b>GeneID (NCBI):</b> 64581	<b>CloneNo.:</b> 251929B1
<b>Source:</b> Rabbit	<b>UNIPROT ID:</b> Q9BXN2-1	
<b>Isotype:</b> IgG	<b>Full Name:</b> C-type lectin domain family 7, member A	
<b>Immunogen Catalog Number:</b> EG1344	<b>Calculated MW:</b> 28kDa	
	<b>Observed MW:</b> 40 kDa	

## Applications

**Tested Applications:**  
WB, Indirect ELISA

**Species Specificity:**  
human, mouse

## Background Information

Dectin-1, also known as CLEC7A or CD369, is a type II membrane receptor consisting of an extracellular C-terminal C-type lectin domain, a short stalk region, a single transmembrane domain and a short N-terminal cytoplasmic tail, which contains an immunoreceptor tyrosine-based activation motif (PMID: 10779524; 21612412). Dectin-1 is expressed on monocytes, macrophages, neutrophils, dendritic cells and a subpopulation of T cells (PMID: 12244185). Dectin-1 plays a role in the innate immune response. It functions as a pattern-recognition receptor and recognizes a variety of  $\beta$ -glucans from fungi, plants and bacteria. Dectin-1 may also participate in orchestrating the adaptive immune response (PMID: 21612412). The apparent molecular weight is larger than the calculated molecular weight due to glycosylation (PMID: 10779524).

## Storage

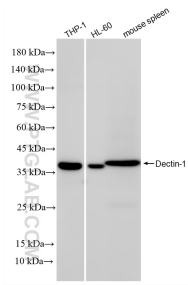
**Storage:**  
Store at -80°C.

**Storage Buffer:**  
PBS only, pH7.3

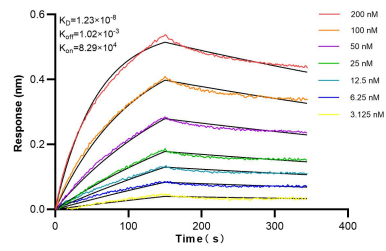
For technical support and original validation data for this product please contact:  
T: 1 (888) 4PTGLAB (1-888-478-4522) (toll free in USA), or 1(312) 455-8498 (outside USA)      E: proteintech@ptglab.com  
W: ptglab.com

This product is exclusively available under Proteintech Group brand and is not available to purchase from any other manufacturer.

## Selected Validation Data



Various lysates were subjected to SDS PAGE followed by western blot with 83739-3-RR (Dectin-1/CLEC7A antibody) at dilution of 1:2000 incubated at room temperature for 1.5 hours. This data was developed using the same antibody clone with 83739-3-PBS in a different storage buffer formulation.



Biolayer interferometry (BLI) kinetic assays of 83739-3-RR against Human Dectin-1/CLEC7A were performed. The affinity constant is 12.3 nM.