

For Research Use Only

Dectin-1/CLEC7A Recombinant monoclonal antibody

Catalog Number:83739-3-RR



Basic Information

Catalog Number: 83739-3-RR	GenBank Accession Number: NM_197947.3	Purification Method: Protein A purification
Size: 100ul , Concentration: 1000 µg/ml by Nanodrop;	GeneID (NCBI): 64581	CloneNo.: 251929B1
Source: Rabbit	UNIPROT ID: Q9BXN2-1	Recommended Dilutions: WB: 1:1000-1:4000
Isotype: IgG	Full Name: C-type lectin domain family 7, member A	
Immunogen Catalog Number: EG1344	Calculated MW: 28kDa	
	Observed MW: 40 kDa	

Applications

Tested Applications: WB, ELISA	Positive Controls: WB : THP-1 cells, HL-60 cells, mouse spleen tissue
Species Specificity: human, mouse	

Background Information

Dectin-1, also known as CLEC7A or CD369, is a type II membrane receptor consisting of an extracellular C-terminal C-type lectin domain, a short stalk region, a single transmembrane domain and a short N-terminal cytoplasmic tail, which contains an immunoreceptor tyrosine-based activation motif (PMID: 10779524; 21612412). Dectin-1 is expressed on monocytes, macrophages, neutrophils, dendritic cells and a subpopulation of T cells (PMID: 12244185). Dectin-1 plays a role in the innate immune response. It functions as a pattern-recognition receptor and recognizes a variety of β -glucans from fungi, plants and bacteria. Dectin-1 may also participate in orchestrating the adaptive immune response (PMID: 21612412). The apparent molecular weight is larger than the calculated molecular weight due to glycosylation (PMID: 10779524).

Storage

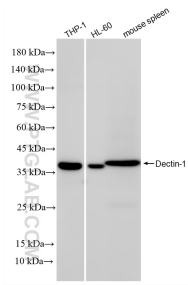
Storage:
Store at -20°C. Stable for one year after shipment.
Storage Buffer:
PBS with 0.02% sodium azide and 50% glycerol, pH7.3
Aliquoting is unnecessary for -20°C storage

*** 20ul sizes contain 0.1% BSA

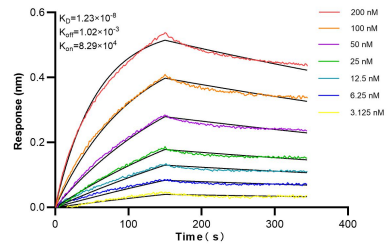
For technical support and original validation data for this product please contact:
T: 1 (888) 4PTGLAB (1-888-478-4522) (toll free in USA), or 1(312) 455-8498 (outside USA)
E: proteintech@ptglab.com
W: ptglab.com

This product is exclusively available under Proteintech Group brand and is not available to purchase from any other manufacturer.

Selected Validation Data



Various lysates were subjected to SDS PAGE followed by western blot with 83739-3-RR (Dectin-1/CLEC7A antibody) at dilution of 1:2000 incubated at room temperature for 1.5 hours.



Biolayer interferometry (BLI) kinetic assays of 83739-3-RR against Human Dectin-1/CLEC7A were performed. The affinity constant is 12.3 nM.