

For Research Use Only

C-Reactive Protein/CRP Recombinant antibody

Catalog Number: 83741-3-RR



Basic Information

Catalog Number: 83741-3-RR	GenBank Accession Number: NM_017096.3	Purification Method: Protein A purification
Size: 100ul , Concentration: 1000 ug/ml by Nanodrop;	GeneID (NCBI): 25419	CloneNo.: 24075988
Source: Rabbit	UNIPROT ID: P48199	Recommended Dilutions: WB 1:2000-1:10000 IHC 1:200-1:800
Isotype: IgG	Full Name: C-reactive protein, pentraxin-related	
	Calculated MW: 25 kDa	
	Observed MW: 25 kDa	

Applications

Tested Applications: WB, IHC, ELISA	Positive Controls:
Species Specificity: rat	WB : rat liver tissue, IHC : rat liver tissue,

Note-IHC: suggested antigen retrieval with **TE buffer pH 9.0; (*) Alternatively, antigen retrieval may be performed with citrate buffer pH 6.0**

Background Information

C-reactive protein (CRP) is an acute-phase serum protein synthesized by the liver in response to interleukin-6 (IL-6) during inflammation. The name CRP derives from its ability to react with the C polysaccharide of Streptococcus pneumoniae. CRP is an annular, pentameric protein belonging to the pentraxin family. CRP displays several functions associated with host defense: it promotes agglutination, bacterial capsular swelling, phagocytosis, and complement fixation through its calcium-dependent binding to phosphorylcholine. It is used mainly as a marker of inflammation.

Storage

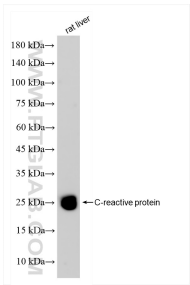
Storage:
Store at -20°C. Stable for one year after shipment.
Storage Buffer:
PBS with 0.02% sodium azide and 50% glycerol pH 7.3.
Aliquoting is unnecessary for -20°C storage

*** 20ul sizes contain 0.1% BSA

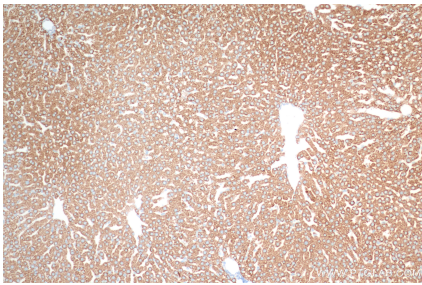
For technical support and original validation data for this product please contact:
T: 1 (888) 4PTGLAB (1-888-478-4522) (toll free in USA), or 1(312) 455-8498 (outside USA)
E: proteintech@ptglab.com
W: ptglab.com

This product is exclusively available under Proteintech Group brand and is not available to purchase from any other manufacturer.

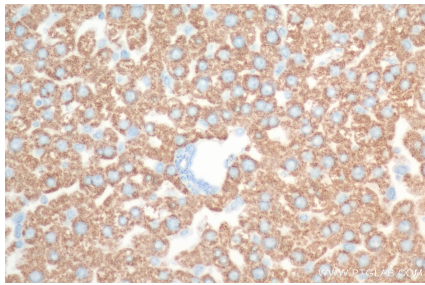
Selected Validation Data



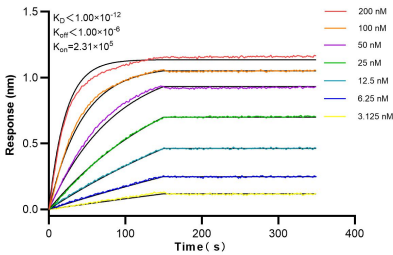
rat liver tissue were subjected to SDS PAGE followed by western blot with 83741-3-RR (C-Reactive Protein/CRP antibody) at dilution of 1:5000 incubated at room temperature for 1.5 hours.



Immunohistochemical analysis of paraffin-embedded rat liver tissue slide using 83741-3-RR (C-Reactive Protein/CRP antibody) at dilution of 1:400 (under 10x lens). Heat mediated antigen retrieval with Tris-EDTA buffer (pH 9.0).



Immunohistochemical analysis of paraffin-embedded rat liver tissue slide using 83741-3-RR (C-Reactive Protein/CRP antibody) at dilution of 1:400 (under 40x lens). Heat mediated antigen retrieval with Tris-EDTA buffer (pH 9.0).



Biolayer interferometry (BLI) kinetic assays of 83741-3-RR against Rat Crp were performed. The affinity constant is below 1 pM.