

For Research Use Only

# Rat C-reactive protein Recombinant antibody, PBS Only (Detector)

Catalog Number: 83741-4-PBS



## Basic Information

<b>Catalog Number:</b> 83741-4-PBS	<b>GenBank Accession Number:</b> NM_017096.3	<b>Purification Method:</b> Protein A purification
<b>Size:</b> 100ug , Concentration: 1 mg/ml by Nanodrop;	<b>GeneID (NCBI):</b> 25419	<b>CloneNo.:</b> 240759F6
<b>Source:</b> Rabbit	<b>UNIPROT ID:</b> P48199	
<b>Isotype:</b> IgG	<b>Full Name:</b> C-reactive protein, pentraxin-related	
	<b>Calculated MW:</b> 25 kDa	

## Applications

**Tested Applications:**  
Sandwich ELISA, Indirect ELISA, Sample test

**Species Specificity:**  
rat

## Product Information

83741-4-PBS targets C-reactive protein as part of a matched antibody pair:

MP00692-2: 83741-5-PBS capture and 83741-4-PBS detection (validated in Sandwich ELISA)

Unconjugated rabbit recombinant monoclonal antibody in PBS only (BSA and azide free) storage buffer at a concentration of 1 mg/mL, ready for conjugation. Created using Proteintech's proprietary in-house recombinant technology. Recombinant production enables unrivalled batch-to-batch consistency, easy scale-up, and future security of supply.

This conjugation ready format makes antibodies ideal for use in many applications including: ELISAs, multiplex assays requiring matched pairs, mass cytometry, and multiplex imaging applications. Antibody use should be optimized by the end user for each application and assay.

## Storage

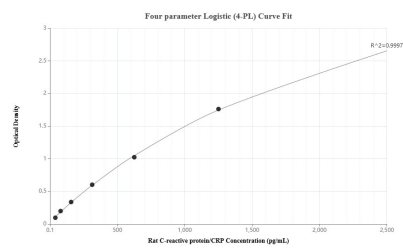
**Storage:**  
Store at -80°C.

**Storage Buffer:**  
PBS Only

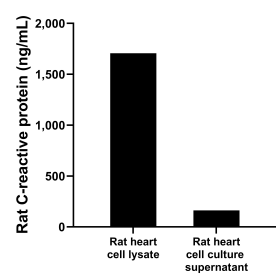
For technical support and original validation data for this product please contact:  
T: 1 (888) 4PTGLAB (1-888-478-4522) (toll free in USA), or 1(312) 455-8498 (outside USA)  
E: [proteintech@ptglab.com](mailto:proteintech@ptglab.com)  
W: [ptglab.com](http://ptglab.com)

This product is exclusively available under Proteintech Group brand and is not available to purchase from any other manufacturer.

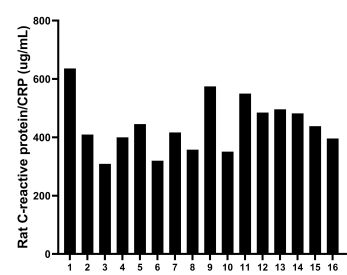
## Selected Validation Data



Sandwich ELISA standard curve of MP00692-2, Rat C-reactive protein/CRP Recombinant Matched Antibody Pair - PBS only. 83741-5-PBS was coated to a plate as the capture antibody and incubated with serial dilutions of standard Eg0942. 83741-4-PBS was HRP conjugated as the detection antibody. Range: 39.1-2500 pg/mL



Rat heart, cut into 1-2 mm pieces, was cultured in 25-30 mL of RPMI supplemented with 10% fetal bovine serum. The cell culture supernatant was removed, assayed for rat C-reactive protein, and measured 161.65 ng/mL. Cells were lysed, assayed for rat C-reactive protein, and measured 1,706.04 ng/mL.



Serum of sixteen rats was measured. The rat C-reactive protein/CRP concentration of detected samples was determined to be 441.8 ug/mL with a range of 309.02 - 635.99 ug/mL.