

For Research Use Only

Rat C-reactive protein Recombinant antibody, PBS Only (Capture)

Catalog Number: 83741-5-PBS



Basic Information

Catalog Number: 83741-5-PBS	GenBank Accession Number: NM_017096.3	Purification Method: Protein A purification
Size: 100ug , Concentration: 1 mg/ml by Nanodrop;	GeneID (NCBI): 25419	CloneNo.: 240759E4
Source: Rabbit	UNIPROT ID: P48199	
Isotype: IgG	Full Name: C-reactive protein, pentraxin-related	
	Calculated MW: 25 kDa	

Applications

Tested Applications:
Sandwich ELISA, Indirect ELISA, Sample test

Species Specificity:
rat

Product Information

83741-5-PBS targets C-reactive protein as part of a matched antibody pair:

MP00692-2: 83741-5-PBS capture and 83741-4-PBS detection (validated in Sandwich ELISA)

Unconjugated rabbit recombinant monoclonal antibody in PBS only (BSA and azide free) storage buffer at a concentration of 1 mg/mL, ready for conjugation. Created using Proteintech's proprietary in-house recombinant technology. Recombinant production enables unrivalled batch-to-batch consistency, easy scale-up, and future security of supply.

This conjugation ready format makes antibodies ideal for use in many applications including: ELISAs, multiplex assays requiring matched pairs, mass cytometry, and multiplex imaging applications. Antibody use should be optimized by the end user for each application and assay.

Storage

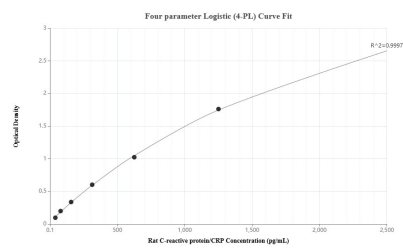
Storage:
Store at -80°C.

Storage Buffer:
PBS Only

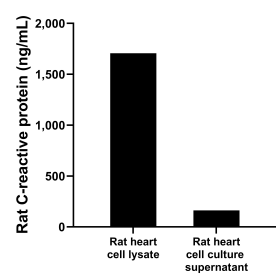
For technical support and original validation data for this product please contact:
T: 1 (888) 4PTGLAB (1-888-478-4522) (toll free in USA), or 1(312) 455-8498 (outside USA)
E: proteintech@ptglab.com
W: ptglab.com

This product is exclusively available under Proteintech Group brand and is not available to purchase from any other manufacturer.

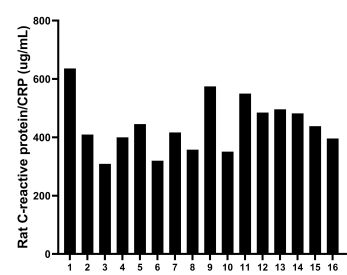
Selected Validation Data



Sandwich ELISA standard curve of MP00692-2, Rat C-reactive protein/CRP Recombinant Matched Antibody Pair - PBS only. 83741-5-PBS was coated to a plate as the capture antibody and incubated with serial dilutions of standard Eg0942. 83741-4-PBS was HRP conjugated as the detection antibody. Range: 39.1-2500 pg/mL



Rat heart, cut into 1-2 mm pieces, was cultured in 25-30 mL of RPMI supplemented with 10% fetal bovine serum. The cell culture supernatant was removed, assayed for rat C-reactive protein, and measured 161.65 ng/mL. Cells were lysed, assayed for rat C-reactive protein, and measured 1,706.04 ng/mL.



Serum of sixteen rats was measured. The rat C-reactive protein/CRP concentration of detected samples was determined to be 441.8 ug/mL with a range of 309.02 - 635.99 ug/mL.