

For Research Use Only

Mouse RAGE Recombinant antibody, PBS Only (Capture/Detector)

Catalog Number: 83742-4-PBS



Basic Information

Catalog Number:

83742-4-PBS

Size:

100ug, Concentration: 1 mg/ml by
Nanodrop;

Source:

Rabbit

Isotype:

IgG

GenBank Accession Number:

NM_007425.3

GeneID (NCBI):

11596

UNIPROT ID:

Q62151-1

Full Name:

advanced glycosylation end product-
specific receptor

Calculated MW:

43 kDa

Purification Method:

Protein A purification

CloneNo.:

240774H4

Applications

Tested Applications:

Cytometric bead array, Sandwich ELISA, Indirect ELISA,
Sample test

Species Specificity:

mouse

Product Information

83742-4-PBS targets RAGE as part of a matched antibody pair:

MP00693-2: 83742-4-PBS capture and 83742-1-PBS detection (validated in Cytometric bead array)

MP00693-3: 83742-3-PBS capture and 83742-4-PBS detection (validated in Cytometric bead array)

MP00693-4: 83742-6-PBS capture and 83742-4-PBS detection (validated in Sandwich ELISA)

Unconjugated rabbit recombinant monoclonal antibody in PBS only (BSA and azide free) storage buffer at a concentration of 1 mg/mL, ready for conjugation. Created using Proteintech's proprietary in-house recombinant technology. Recombinant production enables unrivalled batch-to-batch consistency, easy scale-up, and future security of supply.

This conjugation ready format makes antibodies ideal for use in many applications including: ELISAs, multiplex assays requiring matched pairs, mass cytometry, and multiplex imaging applications. Antibody use should be optimized by the end user for each application and assay.

Storage

Storage:

Store at -80°C.

Storage Buffer:

PBS Only

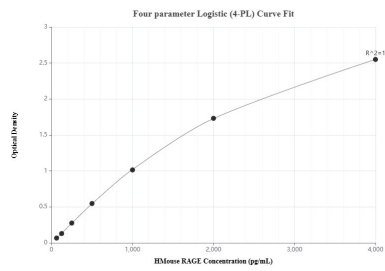
For technical support and original validation data for this product please contact:

T: 1 (888) 4PTGLAB (1-888-478-4522) (toll free
in USA), or 1(312) 455-8498 (outside USA)

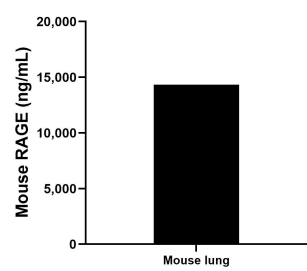
E: proteintech@ptglab.com
W: ptglab.com

This product is exclusively available under Proteintech Group brand and is not available to purchase from any other manufacturer.

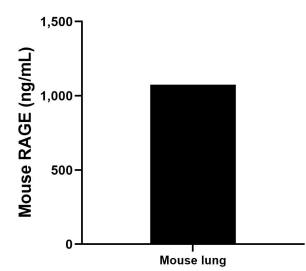
Selected Validation Data



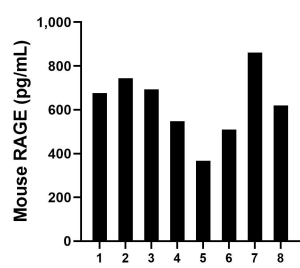
Sandwich ELISA standard curve of MP00693-4, Human RAGE Recombinant Matched Antibody Pair - PBS only. 83742-6-PBS was coated to a plate as the capture antibody and incubated with serial dilutions of standard Eg0873. 83742-4-PBS was HRP conjugated as the detection antibody. Range: 62.5-4000 pg/mL



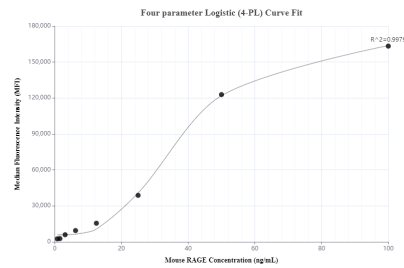
The mean RAGE concentration was determined to be 14,337.96 ng/mL in mouse lung tissue extract based on a 3.8 mg/mL extract load.



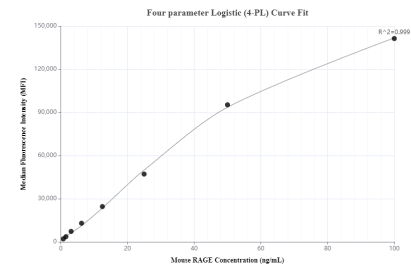
Mouse lung tissue was cultured in RPMI supplemented with 10% fetal bovine serum for 5 days. An aliquot of the cell culture supernate was removed, assayed for mouse RAGE and measured 1,075.53 ng/mL



Serum of eight mice was measured. The mouse RAGE concentration of detected samples was determined to be 627.1 pg/mL with a range of 366.3 - 860.7 pg/mL



Cytometric bead array standard curve of MP00693-2, Mouse RAGE Recombinant Matched Antibody Pair, PBS Only. Capture antibody: 83742-4-PBS. Detection antibody: 83742-1-PBS. Standard: Eg0873. Range: 0.78-100 ng/mL



Cytometric bead array standard curve of MP00693-3, Mouse RAGE Recombinant Matched Antibody Pair, PBS Only. Capture antibody: 83742-3-PBS. Detection antibody: 83742-4-PBS. Standard: Eg0873. Range: 0.78-100 ng/mL