

For Research Use Only

Cathepsin D Recombinant antibody

Catalog Number: 83743-2-RR



Basic Information

Catalog Number: 83743-2-RR	GenBank Accession Number: NM_001909.5	Purification Method: Protein A purification
Size: 100ul , Concentration: 1000 ug/ml by Nanodrop;	GeneID (NCBI): 1509	CloneNo.: 240775E7
Source: Rabbit	UNIPROT ID: P07339	Recommended Dilutions: WB 1:5000-1:50000 IF/ICC 1:250-1:1000
Isotype: IgG	Full Name: cathepsin D	
	Calculated MW: 45kDa	
	Observed MW: 32 kDa, 48 kDa, 52 kDa	

Applications

Tested Applications: WB, IF/ICC, FC (Intra), ELISA	Positive Controls: WB : A431 cells, MCF-7 cells, SH-SY5Y cells
Species Specificity: human	IF/ICC : MCF-7 cells,

Background Information

CTSD (Cathepsin D) also named CPSD, belongs to the peptidase A1 family. It is ubiquitously expressed and is involved in proteolytic degradation, cell invasion, and apoptosis. Human CTSD is synthesized as a 52-kDa precursor that is converted into an active 48-kDa single-chain intermediate in the endosomes, and then into a fully active mature form, composed of a 34-kDa heavy chain and a 14-kDa light chain, in the lysosomes. It is a lysosomal acid protease found in neutrophils and monocytes and involved in the pathogenesis of several diseases such as breast cancer and possibly Alzheimer disease (PMID: 27114232, PMID: 30717773, PMID: 30051532).

Storage

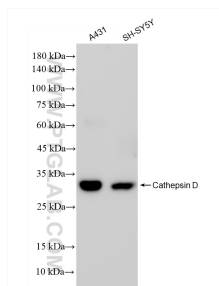
Storage:
Store at -20°C. Stable for one year after shipment.
Storage Buffer:
PBS with 0.02% sodium azide and 50% glycerol pH 7.3.
Aliquoting is unnecessary for -20°C storage

*** 20ul sizes contain 0.1% BSA

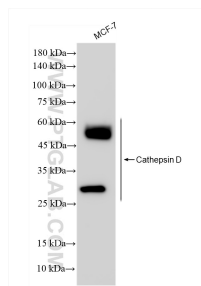
For technical support and original validation data for this product please contact:
T: 1 (888) 4PTGLAB (1-888-478-4522) (toll free in USA), or 1(312) 455-8498 (outside USA)
E: proteintech@ptglab.com
W: ptglab.com

This product is exclusively available under Proteintech Group brand and is not available to purchase from any other manufacturer.

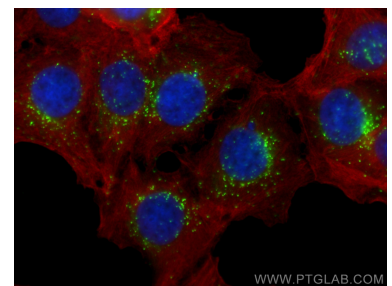
Selected Validation Data



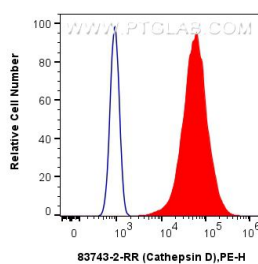
Various lysates were subjected to SDS PAGE followed by western blot with 83743-2-RR (Cathepsin D antibody) at dilution of 1:10000 incubated at room temperature for 1.5 hours.



MCF-7 cells were subjected to SDS PAGE followed by western blot with 83743-2-RR (Cathepsin D antibody) at dilution of 1:10000 incubated at room temperature for 1.5 hours.



Immunofluorescent analysis of (-20°C Methanol) fixed MCF-7 cells using Cathepsin D antibody (83743-2-RR, Clone: 240775E7) at dilution of 1:500 and CoraLite®488-Conjugated Goat Anti-Rabbit IgG(H+L) (SA00013-2), FLNA antibody (67133-1-Ig, Clone: 1G4H3, red).



1×10^6 MCF-7 cells were intracellularly stained with 0.25 μ g Cathepsin D Recombinant antibody (83743-2-RR, Clone:240775E7) and PE-Conjugated AffiniPure Goat Anti-Rabbit IgG(H+L)(red), or 0.25 μ g Isotype Control (blue). Cells were fixed with 4% PFA and permeabilized with Flow Cytometry Perm Buffer (PF00011-C).