

For Research Use Only

# Mesothelin Recombinant antibody

Catalog Number: 83744-2-RR



## Basic Information

<b>Catalog Number:</b> 83744-2-RR	<b>GenBank Accession Number:</b> NM_005823	<b>Purification Method:</b> Protein A purification
<b>Size:</b> 100ul , Concentration: 1000 ug/ml by Nanodrop;	<b>GeneID (NCBI):</b> 10232	<b>CloneNo.:</b> 240795G5
<b>Source:</b> Rabbit	<b>UNIPROT ID:</b> Q13421	<b>Recommended Dilutions:</b> WB 1:2000-1:10000 IF/ICC 1:50-1:500
<b>Isotype:</b> IgG	<b>Full Name:</b> mesothelin	
	<b>Calculated MW:</b> 69KD	
	<b>Observed MW:</b> 69 kDa, 40 kDa	

## Applications

<b>Tested Applications:</b> WB, IF/ICC, ELISA	<b>Positive Controls:</b>
<b>Species Specificity:</b> human	<b>WB :</b> HeLa cells, MKN-45 cells, BxPC-3 cells <b>IF/ICC :</b> HeLa cells, THP-1 cells

## Background Information

Mesothelin (MSLN) is a 40kDa GPI-anchored surface glycoprotein that is expressed on pleural and peritoneal mesothelial cells, but not in other non-neoplastic tissues. The mesothelin gene encodes a 69-71kDa precursor protein that is processed to a 40kDa membrane-bound protein termed mesothelin and a 31kDa shed fragment called megakaryocyte-potentiating factor (MPF) that is released from the cell. Mesothelin is a tumor differentiation antigen present at low levels on a restricted set of normal adult tissues (e.g. mesothelium), and is expressed at high levels in mesotheliomas, as well as ovarian, pancreatic, and lung cancers. Mesothelin may be a new target for immunotherapy (PMID: 20922056, 18691948, 15217923).

## Storage

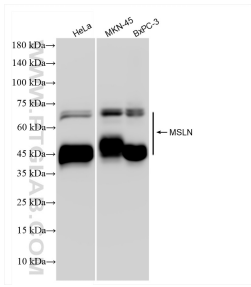
**Storage:**  
Store at -20°C. Stable for one year after shipment.  
**Storage Buffer:**  
PBS with 0.02% sodium azide and 50% glycerol pH 7.3.  
Aliquoting is unnecessary for -20°C storage

\*\*\* 20ul sizes contain 0.1% BSA

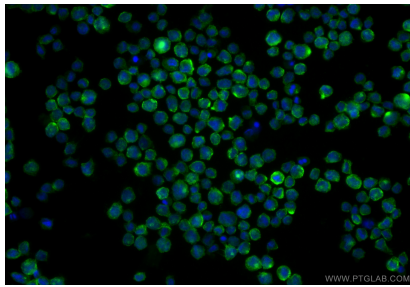
For technical support and original validation data for this product please contact:  
T: 1 (888) 4PTGLAB (1-888-478-4522) (toll free in USA), or 1(312) 455-8498 (outside USA)  
E: [proteintech@ptglab.com](mailto:proteintech@ptglab.com)  
W: [ptglab.com](http://ptglab.com)

This product is exclusively available under Proteintech Group brand and is not available to purchase from any other manufacturer.

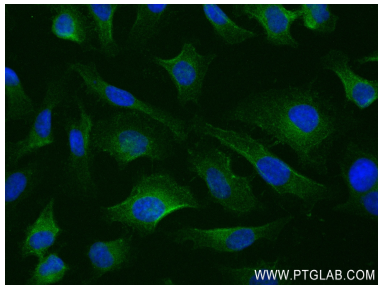
## Selected Validation Data



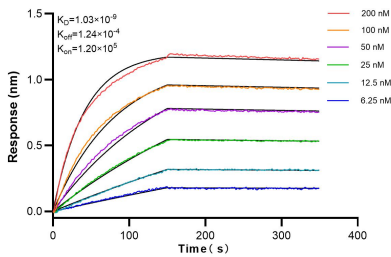
Various lysates were subjected to SDS PAGE followed by western blot with 83744-2-RR (MSLN antibody) at dilution of 1:5000 incubated at room temperature for 1.5 hours.



Immunofluorescent analysis of (4% PFA) fixed THP-1 cells using MSLN antibody (83744-2-RR, Clone: 240795G5) at dilution of 1:500 and CoraLite®488-Conjugated Goat Anti-Rabbit IgG(H+L) (SA00013-2).



Immunofluorescent analysis of (-20°C Ethanol) fixed HeLa cells using MSLN antibody (83744-2-RR, Clone: 240795G5) at dilution of 1:200 and CoraLite®488-Conjugated AffiniPure Goat Anti-Rabbit IgG(H+L) (SA00013-2).



Biolayer interferometry (BLI) kinetic assays of 83744-2-RR against Human MSLN were performed. The affinity constant is 1.03 nM.