

For Research Use Only

Mesothelin Recombinant antibody, PBS Only (Capture)

Catalog Number: 83744-5-PBS



Basic Information

Catalog Number: 83744-5-PBS	GenBank Accession Number: NM_005823	Purification Method: Protein A purification
Size: 100ug , Concentration: 1 mg/ml by Nanodrop;	GeneID (NCBI): 10232	CloneNo.: 240795G1
Source: Rabbit	UNIPROT ID: Q13421	
Isotype: IgG	Full Name: mesothelin	
	Calculated MW: 69KD	

Applications

Tested Applications:
Cytometric bead array, Sandwich ELISA, Indirect ELISA, Sample test

Species Specificity:
human

Product Information

83744-5-PBS targets Mesothelin as part of a matched antibody pair:

MP00697-2: 83744-5-PBS capture and 83744-2-PBS detection (validated in Cytometric bead array, Sandwich ELISA)

Unconjugated rabbit recombinant monoclonal antibody in PBS only (BSA and azide free) storage buffer at a concentration of 1 mg/mL, ready for conjugation. Created using Proteintech's proprietary in-house recombinant technology. Recombinant production enables unrivalled batch-to-batch consistency, easy scale-up, and future security of supply.

This conjugation ready format makes antibodies ideal for use in many applications including: ELISAs, multiplex assays requiring matched pairs, mass cytometry, and multiplex imaging applications. Antibody use should be optimized by the end user for each application and assay.

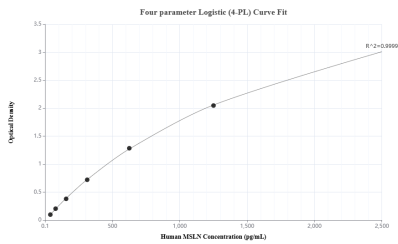
Storage

Storage:
Store at -80°C.
Storage Buffer:
PBS only, pH7.3

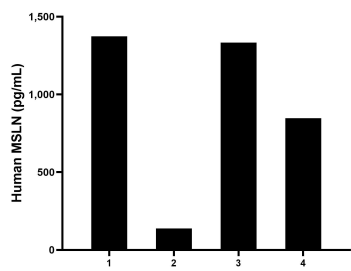
For technical support and original validation data for this product please contact:
T: 1 (888) 4PTGLAB (1-888-478-4522) (toll free in USA), or 1(312) 455-8498 (outside USA)
E: proteintech@ptglab.com
W: ptglab.com

This product is exclusively available under Proteintech Group brand and is not available to purchase from any other manufacturer.

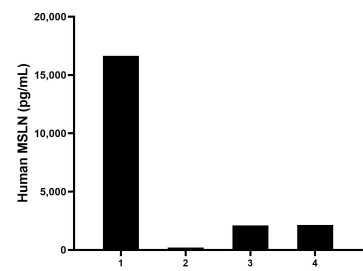
Selected Validation Data



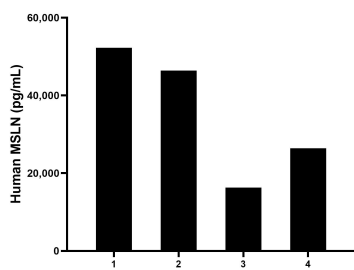
Sandwich ELISA standard curve of MP00697-2, Human MSLN Recombinant Matched Antibody Pair - PBS only. 83744-5-PBS was coated to a plate as the capture antibody and incubated with serial dilutions of standard Eg31658. 83744-2-PBS was HRP conjugated as the detection antibody. Range: 39.1-2500 pg/mL



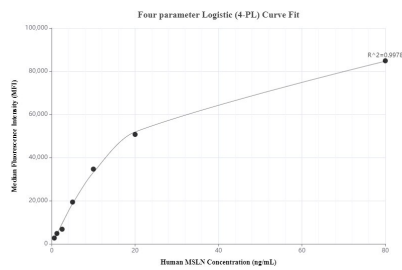
Urine of four humans was measured. The human MSLN concentration of detected samples was determined to be 923.5 pg/mL with a range of 138.7 - 1,373.8 pg/mL.



Saliva of four humans was measured. The human MSLN concentration of detected samples was determined to be 5,273.4 pg/mL with a range of 209.0 - 16,634.9 pg/mL.



Serum of four humans was measured. The human MSLN concentration of detected samples was determined to be 35,341.8 pg/mL with a range of 16,291.9 - 52,246.0 pg/mL



Cytometric bead array standard curve of MP00697-2, MSLN Recombinant Matched Antibody Pair, PBS Only. Capture antibody: 83744-5-PBS. Detection antibody: 83744-2-PBS. Standard: Eg31658. Range: 0.625-80 ng/mL.