

For Research Use Only

OPN1SW Recombinant antibody

Catalog Number: 83754-6-RR



Basic Information

Catalog Number: 83754-6-RR	GenBank Accession Number: BC156719	Purification Method: Protein A purification
Size: 100ul , Concentration: 1000 µg/ml by Nanodrop;	GeneID (NCBI): 611	CloneNo.: 240714A5
Source: Rabbit	UNIPROT ID: P03999	Recommended Dilutions: IHC 1:200-1:800 IF/ICC 1:250-1:1000
Isotype: IgG	Full Name: opsin 1 (cone pigments), short-wave- sensitive	
Immunogen Catalog Number: AG20445	Calculated MW: 348 aa, 39 kDa	

Applications

Tested Applications: IHC, IF/ICC, ELISA	Positive Controls:
Species Specificity: human, mouse	IHC : mouse eye tissue, IF/ICC : mouse eye tissue,
Note-IHC: suggested antigen retrieval with TE buffer pH 9.0; (*) Alternatively, antigen retrieval may be performed with citrate buffer pH 6.0	

Background Information

OPN1SW (Short-wave-sensitive opsin 1) belongs to the G-protein coupled receptor 1 family, opsin subfamily. It's one of three types of cone photoreceptors responsible for normal color vision. Inherited tritan color vision deficiencies exhibit an autosomal dominant inheritance pattern and are caused by mutations in OPN1SW (PMID: 32400513).

Storage

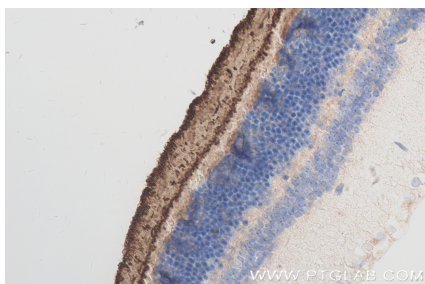
Storage:
Store at -20°C. Stable for one year after shipment.
Storage Buffer:
PBS with 0.02% sodium azide and 50% glycerol pH 7.3.
Aliquoting is unnecessary for -20°C storage

*** 20ul sizes contain 0.1% BSA

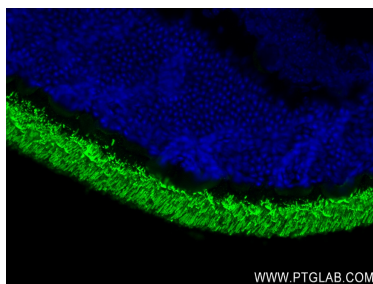
For technical support and original validation data for this product please contact:
T: 1 (888) 4PTGLAB (1-888-478-4522) (toll free in USA), or 1(312) 455-8498 (outside USA)
E: proteintech@ptglab.com
W: ptglab.com

This product is exclusively available under Proteintech Group brand and is not available to purchase from any other manufacturer.

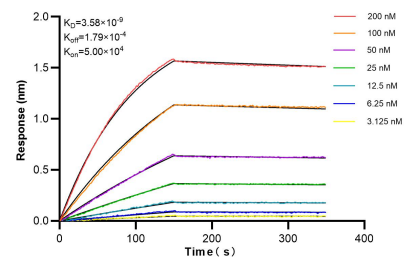
Selected Validation Data



Immunohistochemical analysis of paraffin-embedded mouse eye tissue slide using 83754-6-RR (OPN1SW antibody) at dilution of 1:400 (under 40x lens). Heat mediated antigen retrieval with Tris-EDTA buffer (pH 9.0).



Immunofluorescent analysis of (4% PFA) fixed mouse eye tissue using OPN1SW antibody (83754-6-RR, Clone: 240714A5) at dilution of 1:500 and CoraLite®488-Conjugated Goat Anti-Rabbit IgG(H+L) (SA00013-2).



Biolayer interferometry (BLI) kinetic assays of 83754-6-RR against Human OPN1SW were performed. The affinity constant is 3.58 nM.