

For Research Use Only

Rat Cxcl2 Recombinant antibody, PBS Only

Catalog Number: 83758-1-PBS



Basic Information

Catalog Number: 83758-1-PBS	GenBank Accession Number: NM_053647.1	Purification Method: Protein A purification
Size: 100ug , Concentration: 1 mg/ml by Nanodrop;	GeneID (NCBI): 114105	CloneNo.: 240367C5
Source: Rabbit	UNIPROT ID: P30348	
Isotype: IgG	Full Name: chemokine (C-X-C motif) ligand 2	
	Calculated MW: 11 kDa	
	Observed MW: 10 kDa	

Applications

Tested Applications:
WB, IF/ICC, ELISA

Species Specificity:
human, mouse, rat

Background Information

CXCL2 is a member of the CXC subfamily, which encodes secreted proteins involved in immunoregulatory and inflammatory processes. CXCL2 is expressed at sites of inflammation and may suppress hematopoietic progenitor cell proliferation. CXCL2 plays an critical role in maintaining cancer-induced macrophage infiltration and the resulting mechanical hypersensitivity and persistent spontaneous nociception (PMID: 36754246).

Storage

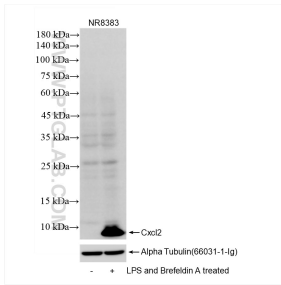
Storage:
Store at -80°C.

Storage Buffer:
PBS Only

For technical support and original validation data for this product please contact:
T: 1 (888) 4PTGLAB (1-888-478-4522) (toll free in USA), or 1(312) 455-8498 (outside USA)
E: proteintech@ptglab.com
W: ptglab.com

This product is exclusively available under Proteintech Group brand and is not available to purchase from any other manufacturer.

Selected Validation Data



LPS and Brefeldin A treated NR8383 cells were subjected to SDS PAGE followed by western blot with 83758-1-RR (Cxcl2 antibody) at dilution of 1:1000 incubated at room temperature for 1.5 hours. This data was developed using the same antibody clone with 83758-1-PBS in a different storage buffer formulation.

