

For Research Use Only

Cxcl2 Recombinant antibody

Catalog Number: 83758-1-RR



Basic Information

Catalog Number:

83758-1-RR

Size:

100ul , Concentration: 1000 ug/ml by Nanodrop;

Source:

Rabbit

Isotype:

IgG

GenBank Accession Number:

NM_053647.1

GeneID (NCBI):

114105

UNIPROT ID:

P30348

Full Name:

chemokine (C-X-C motif) ligand 2

Calculated MW:

11 kDa

Observed MW:

10 kDa

Purification Method:

Protein A purification

CloneNo.:

240367C5

Recommended Dilutions:

WB 1:500-1:2000

IF/ICC 1:50-1:500

Applications

Tested Applications:

WB, IF/ICC, ELISA

Species Specificity:

human, mouse, rat

Positive Controls:

WB : LPS and Brefeldin A treated NR8383 cells,

IF/ICC : PMA, LPS and Brefeldin A treated THP-1 cells,

Background Information

CXCL2 is a member of the CXC subfamily, which encodes secreted proteins involved in immunoregulatory and inflammatory processes. CXCL2 is expressed at sites of inflammation and may suppress hematopoietic progenitor cell proliferation. CXCL2 plays a critical role in maintaining cancer-induced macrophage infiltration and the resulting mechanical hypersensitivity and persistent spontaneous nociception (PMID: 36754246).

Storage

Storage:

Store at -20°C. Stable for one year after shipment.

Storage Buffer:

PBS with 0.02% sodium azide and 50% glycerol pH 7.3.

Aliquoting is unnecessary for -20°C storage

*** 20ul sizes contain 0.1% BSA

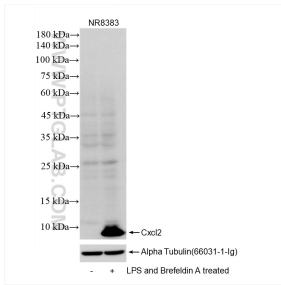
For technical support and original validation data for this product please contact:

T: 1 (888) 4PTGLAB (1-888-478-4522) (toll free in USA), or 1(312) 455-8498 (outside USA)

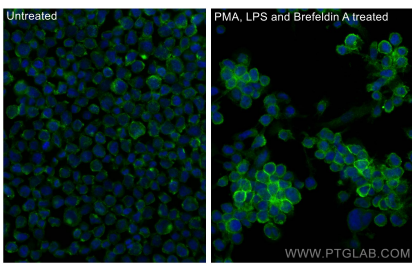
E: proteintech@ptglab.com
W: ptglab.com

This product is exclusively available under Proteintech Group brand and is not available to purchase from any other manufacturer.

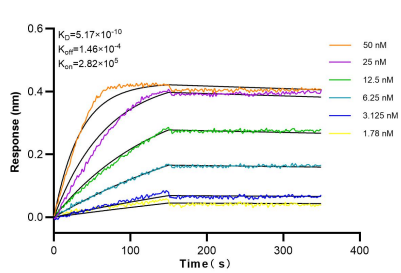
Selected Validation Data



LPS and Brefeldin A treated NR8383 cells were subjected to SDS PAGE followed by western blot with 83758-1-RR (Cxcl2 antibody) at dilution of 1:1000 incubated at room temperature for 1.5 hours.



Immunofluorescent analysis of (4% PFA) fixed PMA, LPS and Brefeldin A treated THP-1 cells using Cxcl2 antibody (83758-1-RR, Clone: 240367C5) at dilution of 1:200 and CoraLite®488-Conjugated Goat Anti-Rabbit IgG(H+L) (SA00013-2).



Biolayer interferometry (BLI) kinetic assays of 83758-1-RR against Mouse Cxcl2 were performed. The affinity constant is 0.517 nM.