

For Research Use Only

BCL9 Recombinant antibody, PBS Only (Capture)

Catalog Number: 83760-3-PBS



Basic Information

Catalog Number: 83760-3-PBS	GenBank Accession Number: BC116451	Purification Method: Protein A purification
Size: 100ug , Concentration: 1 mg/ml by Nanodrop;	GeneID (NCBI): 607	CloneNo.: 240682A9
Source: Rabbit	UNIPROT ID: O00512	
Isotype: IgG	Full Name: B-cell CLL/lymphoma 9	
Immunogen Catalog Number: AG19158	Calculated MW: 1426 aa, 149 kDa	

Applications

Tested Applications:
IF/ICC, FC (Intra), Cytometric bead array, Indirect ELISA

Species Specificity:
human

Product Information

83760-3-PBS targets BCL9 as part of a matched antibody pair:

MP00739-2: 83760-3-PBS capture and 83760-5-PBS detection (validated in Cytometric bead array)

MP00739-3: 83760-3-PBS capture and 83760-4-PBS detection (validated in Cytometric bead array)

Unconjugated rabbit recombinant monoclonal antibody in PBS only (BSA and azide free) storage buffer at a concentration of 1 mg/mL, ready for conjugation. Created using Proteintech's proprietary in-house recombinant technology. Recombinant production enables unrivalled batch-to-batch consistency, easy scale-up, and future security of supply.

This conjugation ready format makes antibodies ideal for use in many applications including: ELISAs, multiplex assays requiring matched pairs, mass cytometry, and multiplex imaging applications. Antibody use should be optimized by the end user for each application and assay.

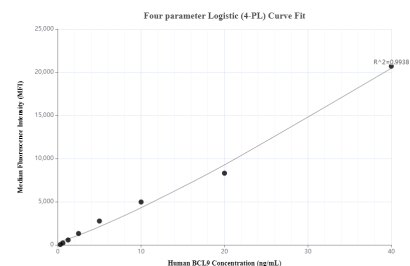
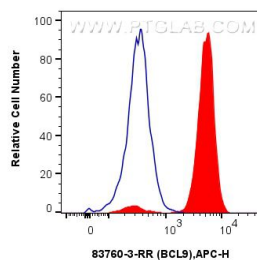
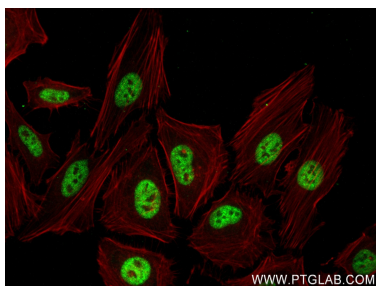
Storage

Storage:
Store at -80°C.
Storage Buffer:
PBS Only

For technical support and original validation data for this product please contact:
T: 1 (888) 4PTGLAB (1-888-478-4522) (toll free in USA), or 1(312) 455-8498 (outside USA)
E: proteintech@ptglab.com
W: ptglab.com

This product is exclusively available under Proteintech Group brand and is not available to purchase from any other manufacturer.

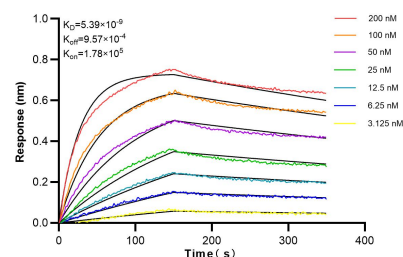
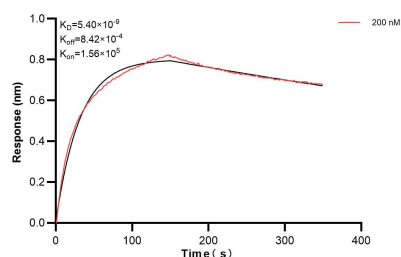
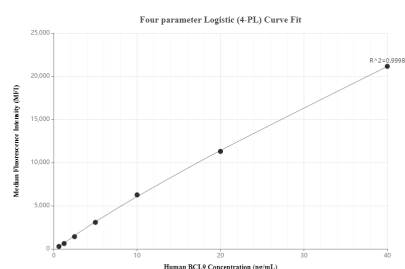
Selected Validation Data



Immunofluorescent analysis of (4% PFA) fixed HeLa cells using BCL9 antibody (83760-3-RR, Clone: 240682A9) at dilution of 1:300 and CoraLite®488-Conjugated AffiniPure Goat Anti-Rabbit IgG(H+L) (SA00013-2), CL594-Phalloidin (red). This data was developed using the same antibody clone with 83760-3-PBS in a different storage buffer formulation.

1x10⁶ SH-SY5Y cells were intracellularly stained with 0.25 ug Bcl9 Recombinant Antibody (83760-3-RR, Clone:240682A9) and APC-Conjugated AffiniPure Goat Anti-Rabbit IgG(H+L)(red), or 0.25 ug Isotype Control (blue). Cells were fixed and permeabilized with True-Nuclear Transcription Factor Buffer Set. This data was developed using the same antibody clone with 83760-3-PBS in a different storage buffer formulation.

Cytometric bead array standard curve of MP00739-2, BCL9 Recombinant Matched Antibody Pair, PBS Only. Capture antibody: 83760-3-PBS. Detection antibody: 83760-5-PBS. Standard: Ag19158. Range: 0.313-40 ng/mL.



Cytometric bead array standard curve of MP00739-3, BCL9 Recombinant Matched Antibody Pair, PBS Only. Capture antibody: 83760-3-PBS. Detection antibody: 83760-4-PBS. Standard: Ag19158. Range: 0.625-40 ng/mL.

Bioluminescence resonance energy transfer (BRET) kinetic assay of 83760-3-PBS against Human BCL9 was performed. The affinity constant is 5.40 nM.

Bioluminescence resonance energy transfer (BRET) kinetic assays of 83760-3-RR against Human BCL9 were performed. The affinity constant is 5.39 nM.