

For Research Use Only

BCL9 Recombinant antibody, PBS Only (Detector)

Catalog Number: 83760-5-PBS



Basic Information

| | | |
|---|--|---|
| Catalog Number: 83760-5-PBS | GenBank Accession Number: BC116451 | Purification Method: Protein A purification |
| Size: 100ug , Concentration: 1 mg/ml by Nanodrop; | GeneID (NCBI): 607 | CloneNo.: 240682C12 |
| Source: Rabbit | UNIPROT ID: O00512 | |
| Isotype: IgG | Full Name: B-cell CLL/lymphoma 9 | |
| Immunogen Catalog Number: AG19158 | Calculated MW: 1426 aa, 149 kDa | |

Applications

Tested Applications:
Cytometric bead array, Sandwich ELISA, Indirect ELISA, Sample test

Species Specificity:
human

Product Information

83760-5-PBS targets BCL9 as part of a matched antibody pair:

MP00739-2: 83760-3-PBS capture and 83760-5-PBS detection (validated in Cytometric bead array)

MP00739-4: 83760-6-PBS capture and 83760-5-PBS detection (validated in Sandwich ELISA)

Unconjugated rabbit recombinant monoclonal antibody in PBS only (BSA and azide free) storage buffer at a concentration of 1 mg/mL, ready for conjugation. Created using Proteintech's proprietary in-house recombinant technology. Recombinant production enables unrivalled batch-to-batch consistency, easy scale-up, and future security of supply.

This conjugation ready format makes antibodies ideal for use in many applications including: ELISAs, multiplex assays requiring matched pairs, mass cytometry, and multiplex imaging applications. Antibody use should be optimized by the end user for each application and assay.

Storage

Storage:
Store at -80°C.
Storage Buffer:
PBS Only

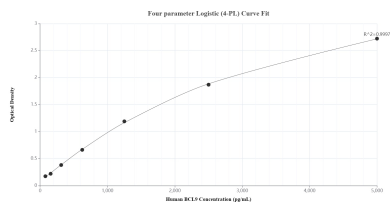
For technical support and original validation data for this product please contact:

T: 1 (888) 4PTGLAB (1-888-478-4522) (toll free in USA), or 1(312) 455-8498 (outside USA)

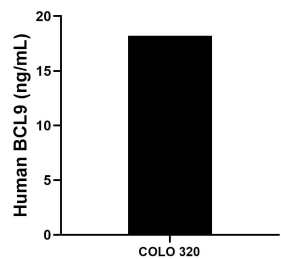
E: proteintech@ptglab.com
W: ptglab.com

This product is exclusively available under Proteintech Group brand and is not available to purchase from any other manufacturer.

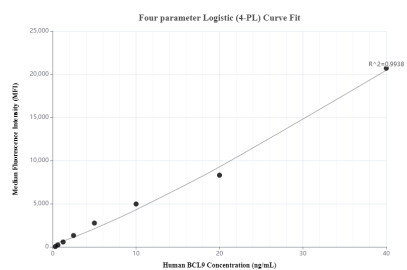
Selected Validation Data



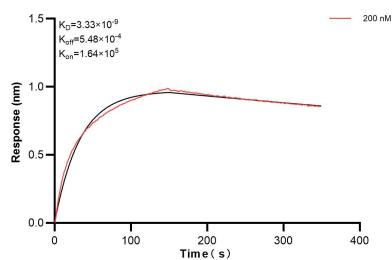
Sandwich ELISA standard curve of MP00739-4, Human BCL9 Recombinant Matched Antibody Pair - PBS only. 83760-6-PBS was coated to a plate as the capture antibody and incubated with serial dilutions of standard Ag19158. 83760-5-PBS was HRP conjugated as the detection antibody. Range: 78.1-5000 pg/mL.



The mean BCL9 concentration was determined to be 18.2 ng/mL in COLO 320 cell extract based on a 2.0 mg/mL extract load.



Cytometric bead array standard curve of MP00739-2, BCL9 Recombinant Matched Antibody Pair, PBS Only. Capture antibody: 83760-3-PBS. Detection antibody: 83760-5-PBS. Standard: Ag19158. Range: 0.313-40 ng/mL.



Biolayer interferometry (BLI) kinetic assay of 83760-5-PBS against Human BCL9 was performed. The affinity constant is 3.33 nM.