

For Research Use Only

SMUG1 Recombinant antibody, PBS Only (Capture)

Catalog Number: 83771-3-PBS



Basic Information

| | | |
|---|--|---|
| Catalog Number: 83771-3-PBS | GenBank Accession Number: BC000417 | Purification Method: Protein A purification |
| Size: 100ug , Concentration: 1 mg/ml by Nanodrop; | GeneID (NCBI): 23583 | CloneNo.: 240817D1 |
| Source: Rabbit | UNIPROT ID: Q53HV7 | |
| Isotype: IgG | Full Name: single-strand-selective monofunctional uracil-DNA glycosylase 1 | |
| Immunogen Catalog Number: AG13934 | Calculated MW: 177 aa, 20 kDa | |

Applications

Tested Applications:
Cytometric bead array, Sandwich ELISA, Indirect ELISA, Sample test

Species Specificity:
human

Product Information

83771-3-PBS targets SMUG1 as part of a matched antibody pair:

MP00765-2: 83771-3-PBS capture and 83771-2-PBS detection (validated in Cytometric bead array, Sandwich ELISA)

Unconjugated rabbit recombinant monoclonal antibody in PBS only (BSA and azide free) storage buffer at a concentration of 1 mg/mL, ready for conjugation. Created using Proteintech's proprietary in-house recombinant technology. Recombinant production enables unrivalled batch-to-batch consistency, easy scale-up, and future security of supply.

This conjugation ready format makes antibodies ideal for use in many applications including: ELISAs, multiplex assays requiring matched pairs, mass cytometry, and multiplex imaging applications. Antibody use should be optimized by the end user for each application and assay.

Storage

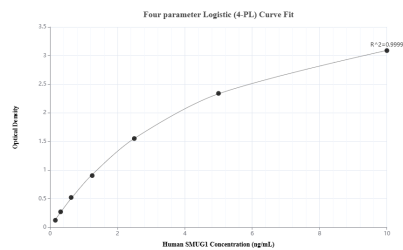
Storage:
Store at -80°C.

Storage Buffer:
PBS Only

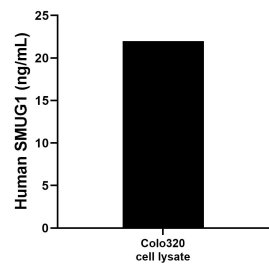
For technical support and original validation data for this product please contact:
T: 1 (888) 4PTGLAB (1-888-478-4522) (toll free in USA), or 1(312) 455-8498 (outside USA)
E: proteintech@ptglab.com
W: ptglab.com

This product is exclusively available under Proteintech Group brand and is not available to purchase from any other manufacturer.

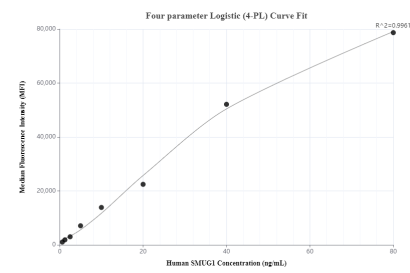
Selected Validation Data



Sandwich ELISA standard curve of MP00765-2, Human SMUG1 Recombinant Matched Antibody Pair - PBS only. 83771-3-PBS was coated to a plate as the capture antibody and incubated with serial dilutions of standard Ag13934. 83771-2-PBS was HRP conjugated as the detection antibody. Range: 0.156-10 ng/mL



Colo320 cell lysate was measured. The human SMUG1 concentration of detected samples was determined to be 21.98 ng/mL (based on a 2.0 mg/mL extract load).



Cytometric bead array standard curve of MP00765-2, SMUG1 Recombinant Matched Antibody Pair, PBS Only. Capture antibody: 83771-3-PBS. Detection antibody: 83771-2-PBS. Standard: Ag13934. Range: 0.625-80 ng/mL