

For Research Use Only

CTLA-4/CD152 Recombinant antibody, PBS Only (Detector)

Catalog Number: 83778-3-PBS



Basic Information

Catalog Number: 83778-3-PBS	GenBank Accession Number: BC070162	Purification Method: Protein A purification
Size: 100ug , Concentration: 1 mg/ml by Nanodrop;	GeneID (NCBI): 1493	CloneNo.: 240793F3
Source: Rabbit	UNIPROT ID: P16410	
Isotype: IgG	Full Name: cytotoxic T-lymphocyte-associated protein 4	
	Calculated MW: 223 aa, 25 kDa	

Applications

Tested Applications:
Cytometric bead array, Sandwich ELISA, Indirect ELISA, Sample test

Species Specificity:
human

Product Information

83778-3-PBS targets CTLA-4/CD152 as part of a matched antibody pair:

MP00736-3: 83778-2-PBS capture and 83778-3-PBS detection (validated in Cytometric bead array)

MP00736-4: 83778-6-PBS capture and 83778-3-PBS detection (validated in Sandwich ELISA)

Unconjugated rabbit recombinant monoclonal antibody in PBS only (BSA and azide free) storage buffer at a concentration of 1 mg/mL, ready for conjugation. Created using Proteintech's proprietary in-house recombinant technology. Recombinant production enables unrivalled batch-to-batch consistency, easy scale-up, and future security of supply.

This conjugation ready format makes antibodies ideal for use in many applications including: ELISAs, multiplex assays requiring matched pairs, mass cytometry, and multiplex imaging applications. Antibody use should be optimized by the end user for each application and assay.

Storage

Storage:
Store at -80°C.
Storage Buffer:
PBS Only

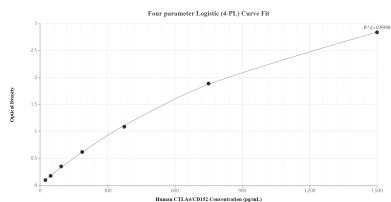
For technical support and original validation data for this product please contact:

T: 1 (888) 4PTGLAB (1-888-478-4522) (toll free in USA), or 1(312) 455-8498 (outside USA)

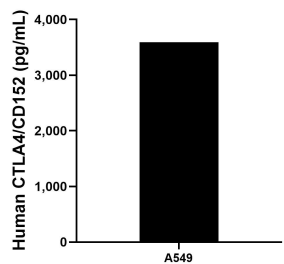
E: proteintech@ptglab.com
W: ptglab.com

This product is exclusively available under Proteintech Group brand and is not available to purchase from any other manufacturer.

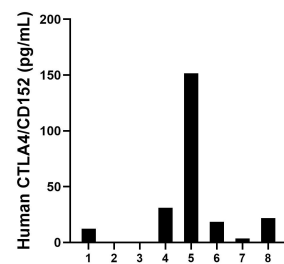
Selected Validation Data



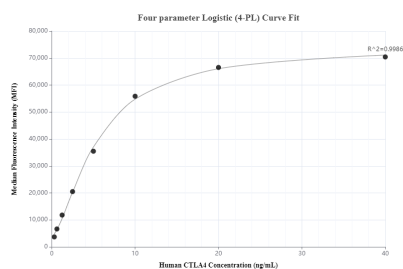
Sandwich ELISA standard curve of MP00736-4, Human CTLA4/CD152 Recombinant Matched Antibody Pair - PBS only. 83778-6-PBS was coated to a plate as the capture antibody and incubated with serial dilutions of standard Eg0972. 83778-3-PBS was HRP conjugated as the detection antibody. Range: 23.4-1500 pg/mL



The mean CTLA4/CD152 concentration was determined to be 3,592.9 pg/mL in A549 cell extract based on a 2.2 mg/mL extract load.



Serum of eight individual healthy human donors was measured. The human CTLA4/CD152 concentration of detected samples was determined to be 39.8 pg/mL with a range of ND-151.6 pg/mL



Cytometric bead array standard curve of MP00736-3, CTLA4/CD152 Recombinant Matched Antibody Pair, PBS Only. Capture antibody: 83778-2-PBS. Detection antibody: 83778-3-PBS. Standard: Eg0972. Range: 0.313-40 ng/mL