

For Research Use Only

# CTLA-4/CD152 Recombinant antibody, PBS Only (Capture)

Catalog Number: 83778-6-PBS



## Basic Information

<b>Catalog Number:</b> 83778-6-PBS	<b>GenBank Accession Number:</b> BC070162	<b>Purification Method:</b> Protein A purification
<b>Size:</b> 100ug , Concentration: 1 mg/ml by Nanodrop;	<b>GeneID (NCBI):</b> 1493	<b>CloneNo.:</b> 240793E6
<b>Source:</b> Rabbit	<b>UNIPROT ID:</b> P16410	
<b>Isotype:</b> IgG	<b>Full Name:</b> cytotoxic T-lymphocyte-associated protein 4	
	<b>Calculated MW:</b> 223 aa, 25 kDa	

## Applications

**Tested Applications:**  
Sandwich ELISA, Indirect ELISA, Sample test

**Species Specificity:**  
human

## Product Information

83778-6-PBS targets CTLA-4/CD152 as part of a matched antibody pair:

MP00736-4: 83778-6-PBS capture and 83778-3-PBS detection (validated in Sandwich ELISA)

Unconjugated rabbit recombinant monoclonal antibody in PBS only (BSA and azide free) storage buffer at a concentration of 1 mg/mL, ready for conjugation. Created using Proteintech's proprietary in-house recombinant technology. Recombinant production enables unrivalled batch-to-batch consistency, easy scale-up, and future security of supply.

This conjugation ready format makes antibodies ideal for use in many applications including: ELISAs, multiplex assays requiring matched pairs, mass cytometry, and multiplex imaging applications. Antibody use should be optimized by the end user for each application and assay.

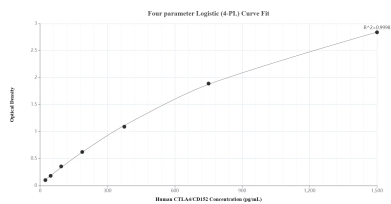
## Storage

**Storage:**  
Store at -80°C.  
**Storage Buffer:**  
PBS Only

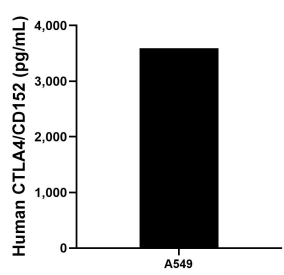
For technical support and original validation data for this product please contact:  
T: 1 (888) 4PTGLAB (1-888-478-4522) (toll free in USA), or 1(312) 455-8498 (outside USA)  
E: [proteintech@ptglab.com](mailto:proteintech@ptglab.com)  
W: [ptglab.com](http://ptglab.com)

This product is exclusively available under Proteintech Group brand and is not available to purchase from any other manufacturer.

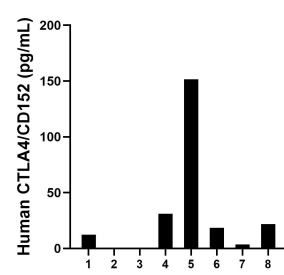
## Selected Validation Data



Sandwich ELISA standard curve of MP00736-4, Human CTLA4/CD152 Recombinant Matched Antibody Pair - PBS only. 83778-6-PBS was coated to a plate as the capture antibody and incubated with serial dilutions of standard Eg0972. 83778-3-PBS was HRP conjugated as the detection antibody. Range: 23.4-1500 pg/mL



The mean CTLA4/CD152 concentration was determined to be 3,592.9 pg/mL in A549 cell extract based on a 2.2 mg/mL extract load.



Serum of eight individual healthy human donors was measured. The human CTLA4/CD152 concentration of detected samples was determined to be 39.8 pg/mL with a range of ND-151.6 pg/mL