

For Research Use Only

BAG3 Recombinant antibody, PBS Only (Capture)

Catalog Number: 83779-1-PBS



Basic Information

Catalog Number: 83779-1-PBS	GenBank Accession Number: BC006418	Purification Method: Protein A purification
Size: 100ug , Concentration: 1 mg/ml by Nanodrop;	GeneID (NCBI): 9531	CloneNo.: 240860C9
Source: Rabbit	UNIPROT ID: O95817	
Isotype: IgG	Full Name: BCL2-associated athanogene 3	
Immunogen Catalog Number: AG0956	Calculated MW: 61 kDa	

Applications

Tested Applications:
Cytometric bead array, Sandwich ELISA, Indirect ELISA, Sample test

Species Specificity:
human

Product Information

83779-1-PBS targets BAG3 as part of a matched antibody pair:

MP00740-1: 83779-1-PBS capture and 83779-2-PBS detection (validated in Cytometric bead array, Sandwich ELISA)

MP00740-2: 83779-1-PBS capture and 83779-3-PBS detection (validated in Cytometric bead array)

Unconjugated rabbit recombinant monoclonal antibody in PBS only (BSA and azide free) storage buffer at a concentration of 1 mg/mL, ready for conjugation. Created using Proteintech's proprietary in-house recombinant technology. Recombinant production enables unrivalled batch-to-batch consistency, easy scale-up, and future security of supply.

This conjugation ready format makes antibodies ideal for use in many applications including: ELISAs, multiplex assays requiring matched pairs, mass cytometry, and multiplex imaging applications. Antibody use should be optimized by the end user for each application and assay.

Storage

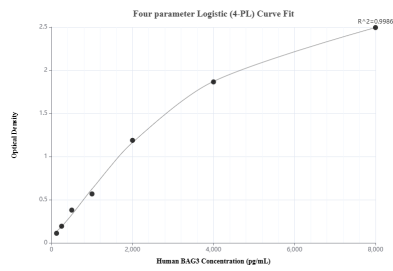
Storage:
Store at -80°C.

Storage Buffer:
PBS Only

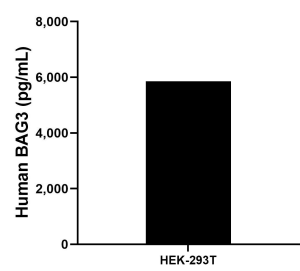
For technical support and original validation data for this product please contact:
T: 1 (888) 4PTGLAB (1-888-478-4522) (toll free in USA), or 1(312) 455-8498 (outside USA)
E: proteintech@ptglab.com
W: ptglab.com

This product is exclusively available under Proteintech Group brand and is not available to purchase from any other manufacturer.

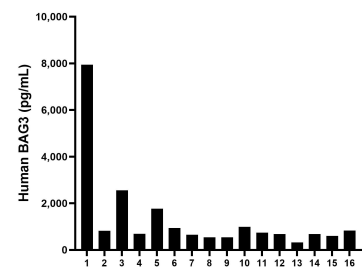
Selected Validation Data



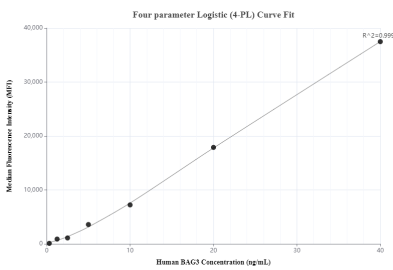
Sandwich ELISA standard curve of MP00740-1, Human BAG3 Recombinant Matched Antibody Pair - PBS only. 83779-1-PBS was coated to a plate as the capture antibody and incubated with serial dilutions of standard Ag0956. 83779-2-PBS was HRP conjugated as the detection antibody. Range: 125-8000 pg/mL



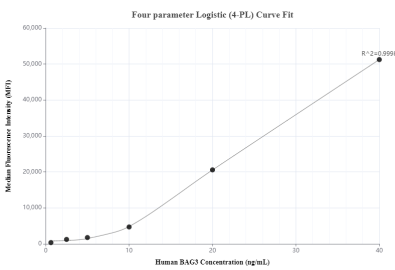
The mean BAG3 concentration was determined to be 5,853.6 /mL in HEK-293T cell extract based on a 1.4 mg/mL extract load.



Plasma of sixteen individual healthy human donors was measured. The human BAG3 concentration of detected samples was determined to be 1,332.2 pg/mL with a range of 324.4 - 7,946.1 pg/mL



Cytometric bead array standard curve of MP00740-1, BAG3 Recombinant Matched Antibody Pair, PBS Only. Capture antibody: 83779-1-PBS. Detection antibody: 83779-2-PBS. Standard: Ag0956. Range: 0.313-40 ng/mL



Cytometric bead array standard curve of MP00740-2, BAG3 Recombinant Matched Antibody Pair, PBS Only. Capture antibody: 83779-1-PBS. Detection antibody: 83779-3-PBS. Standard: Ag0956. Range: 0.625-40 ng/mL